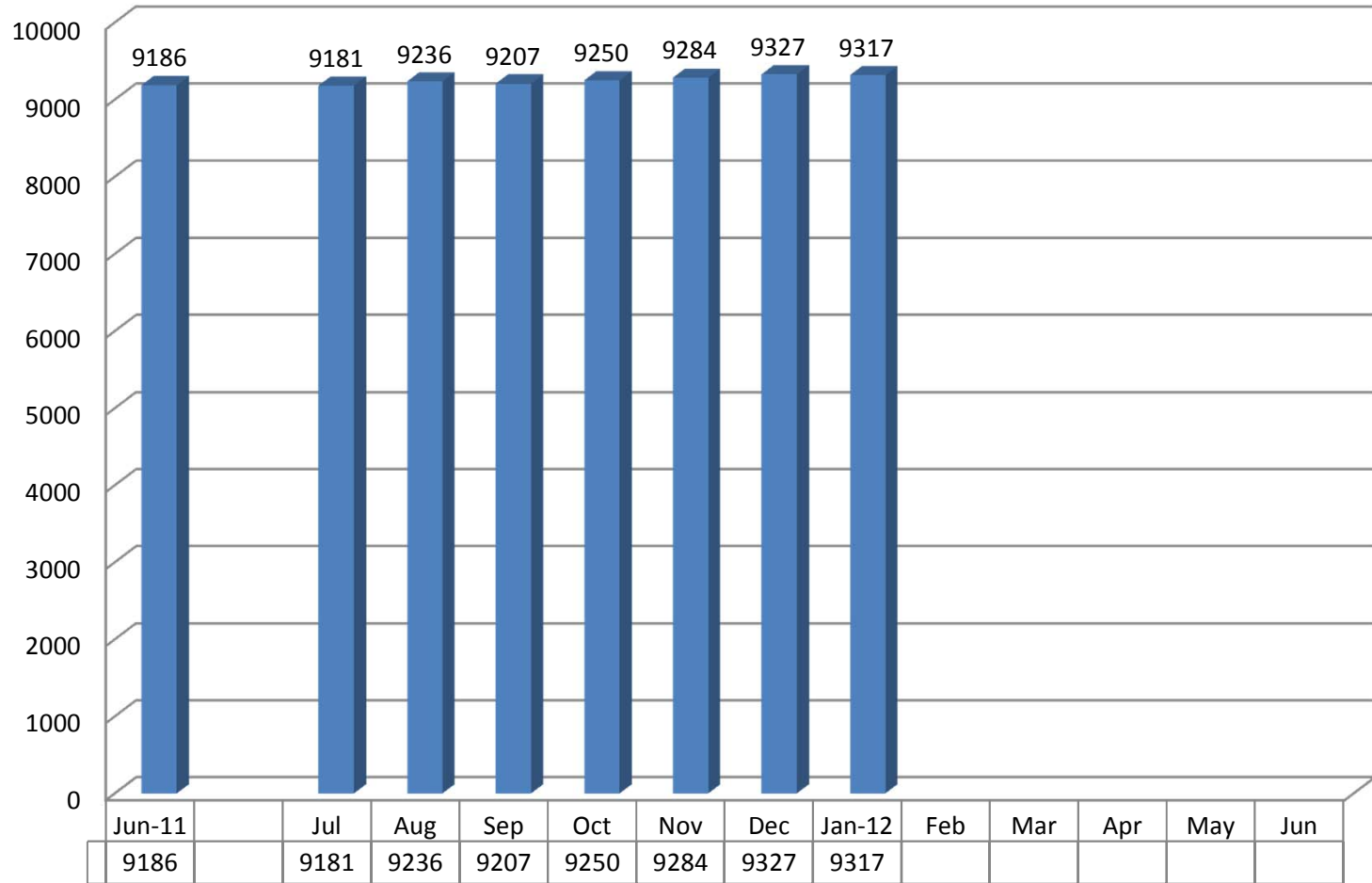


**Kansas Department of Corrections
Graphic Highlights -- Monthly Offender Population Report (January 2012)**

End-of-Month Inmate Population: FY 2012 To-Date

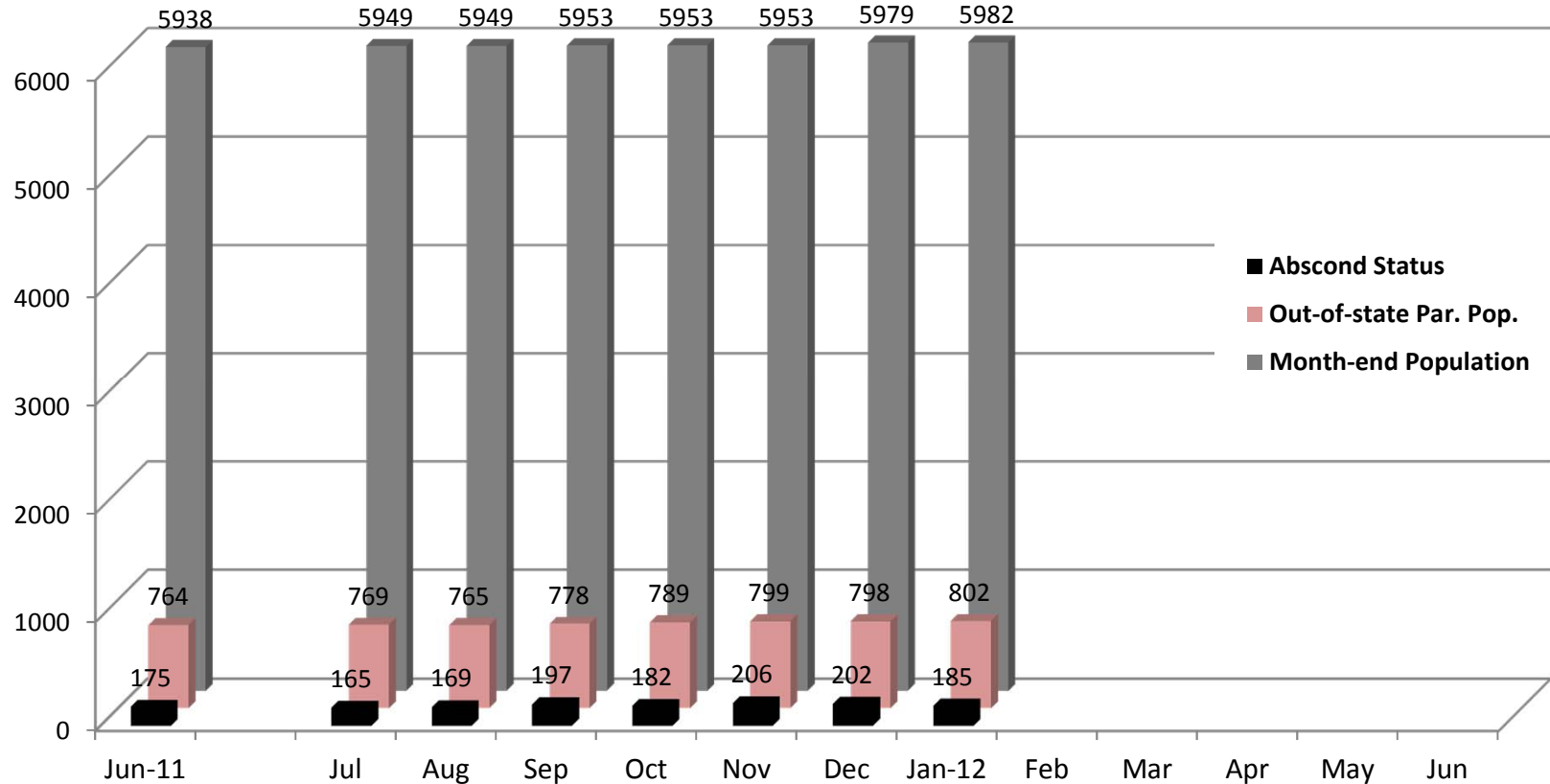


Change from Prev. Mo.		-5	55	-29	43	34	43	-10				
Change from June, 2011	9186	-5	50	21	64	98	141	131				

**Figures reflect the total inmate population (combined DOC and Non-DOC facility populations)*

**Kansas Department of Corrections
Graphic Highlights -- Monthly Offender Population Report (January 2012)**

**Components of the End-of-Month Population Under Post-Incarceration Management:
FY2012 To-Date**



In-State Population
(Change):

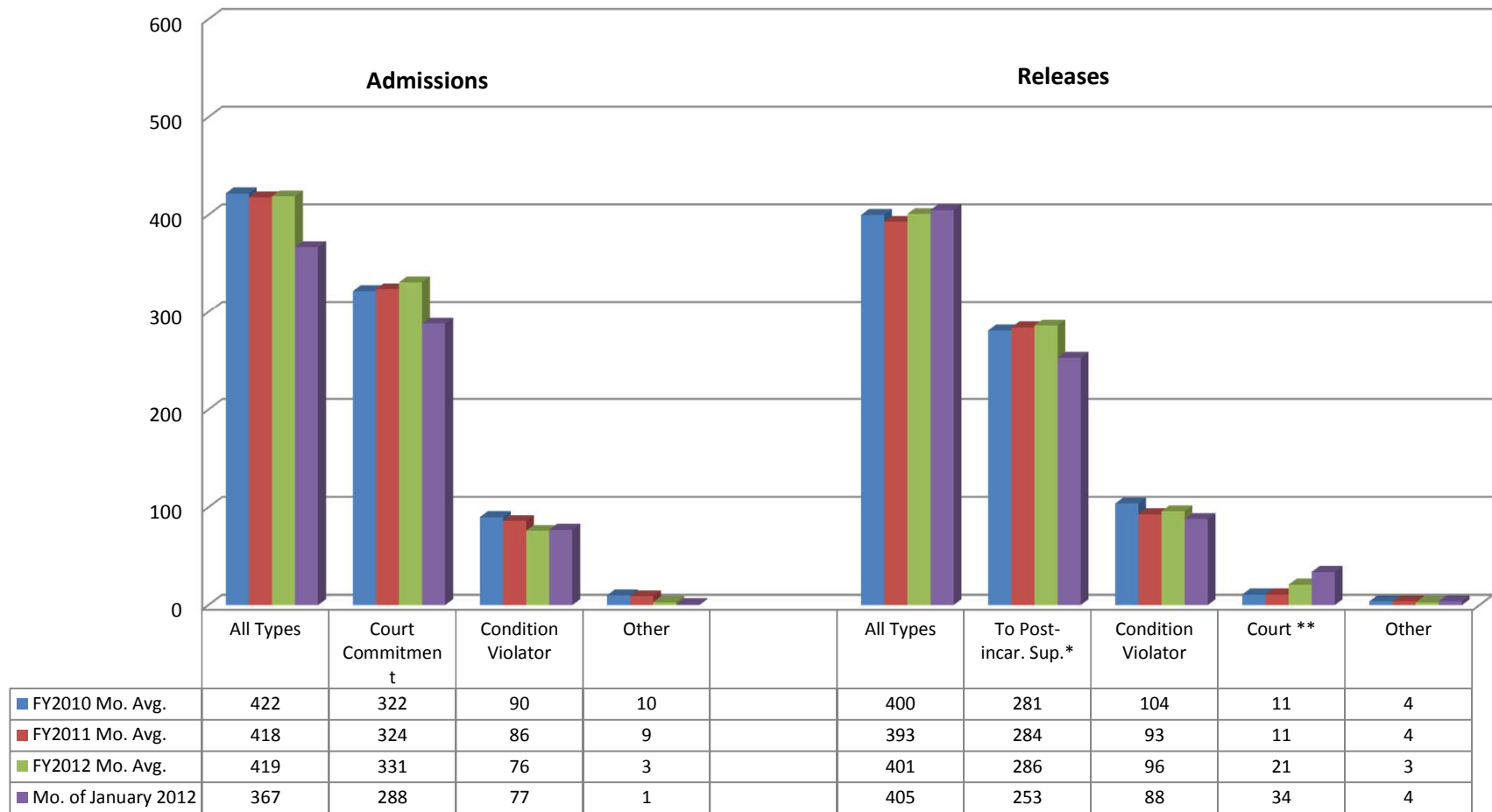
Change from Prev. Month	11	0	4	0	0	26	3
Change from June, 2011	11	11	15	15	15	41	44

**In-state population is comprised of Kansas offenders supervised in Kansas and out-of-state offenders supervised in Kansas. Out-of-state population is comprised of Kansas offenders supervised out-of-state. Those on abscond status have active warrants (whereabouts unknown).*

Kansas Department of Corrections

Graphic Highlights -- Monthly Offender Population Report (January 2012)

Number of Admission and Release Events Per Month (by Major Category): Comparison of FY2010, FY2011, and FY2012 To-Date Monthly Averages with Current Month's Totals



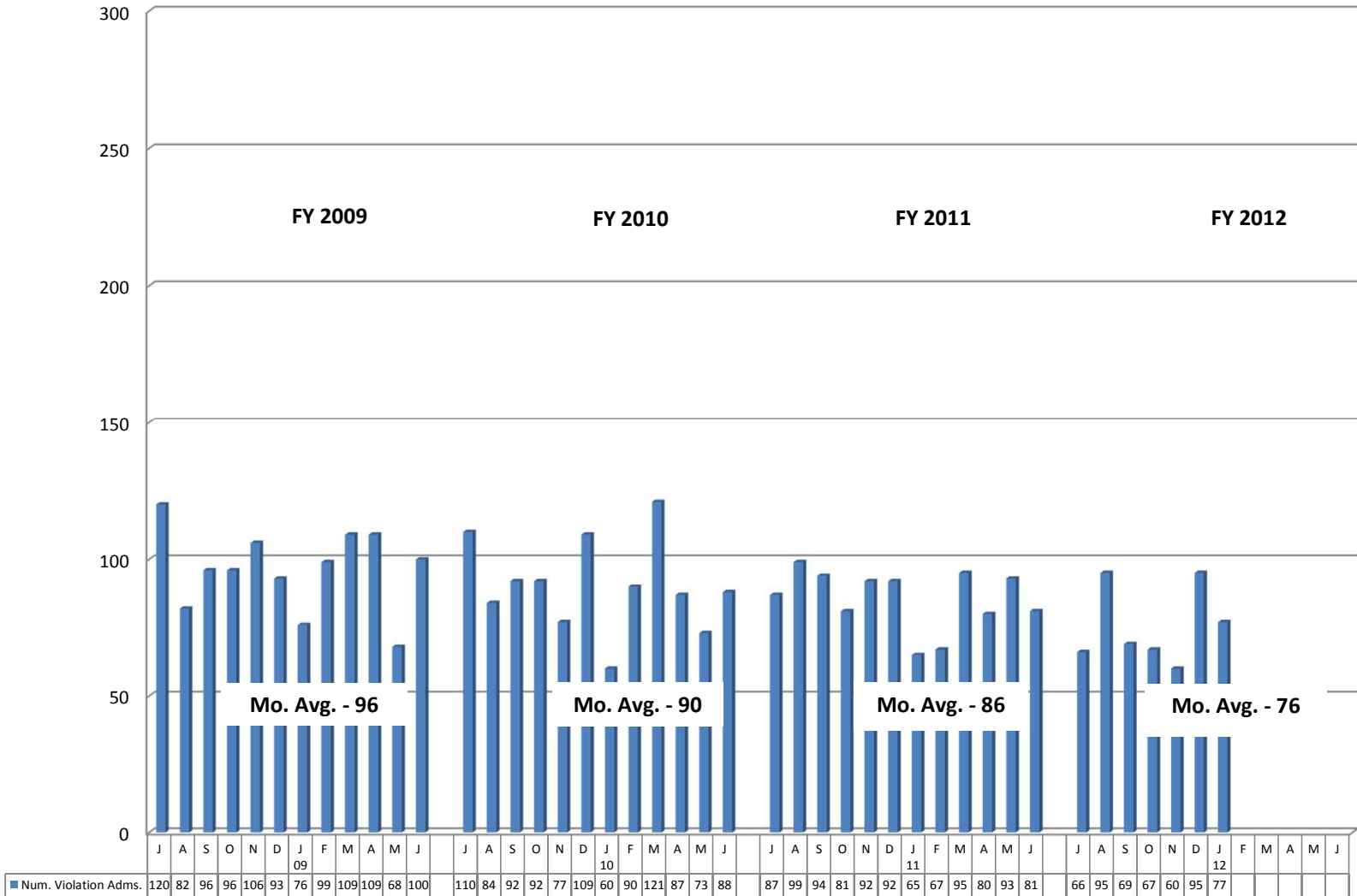
* Includes releases to supervision via the provisions of the Kansas Sentencing Guidelines Act of 1993, as well as parole releases by action of the Kansas Prisoner Review Board.

**Figure can be a negative number for a particular month [since it is based on the total number whose last exit for the period (fiscal year to date) was via "out-to-court" minus the previous month's total, which can be a smaller or greater number].

Kansas Department of Corrections

Graphic Highlights -- Monthly Offender Population Report (January 2012)

Number of Return Admissions for Condition Violations by Month: FY2009 - FY2012 To-Date*



*Total number of admissions for violation of the conditions of release (no new sentence).

Kansas Department of Corrections
 End-of-Month Offender Population Report: January 2012 (Month 7, FY 2012)

Table 1
Number of Inmates Confined and Average Daily Population: FY 2011 and FY 2012

Correctional Facility	Number Confined			Average Daily Population***		
	12/31/2011	1/31/2012	Change	FY 2011	FY 2012	Change
KDOC Facilities						
Lansing: Total	2,422	2,427	5	2,368	2,415	47
Central	1,806	1,805	-1	1,749	1,794	45
East	616	622	6	619	621	2
** South (Osawatomie)	-	-	0	-	-	0
Hutchinson: Total	1,869	1,879	10	1,863	1,849	-14
Central	1,090	1,099	9	1,086	1,070	-16
East	496	496	0	493	496	3
South	237	236	-1	238	238	0
Work Release	46	48	2	46	45	-1
El Dorado: Total	1,365	1,336	-29	1,281	1,337	56
Central (General Population)	985	981	-4	937	975	38
Central - RDU	380	355	-25	344	362	18
** East (Toronto)	-	-	0	-	-	0
** North	-	-	0	-	-	0
Topeka: Total	666	657	-9	615	644	29
Central (General Population)	592	570	-22	597	574	-23
RDU	53	65	12	30	49	19
* Federal Inmates	5	5	0	7	6	-1
Work Release	16	17	1	18	15	-3
Norton: Total	845	847	2	808	841	33
Central	720	720	0	713	717	4
** East (Stockton) <i>re-opened 9-2010</i>	125	127	2	95	124	29
Ellsworth	820	804	-16	820	818	-2
General Population	820	804	-16	820	818	-2
Work Release			0	-		0
Winfield: Total	785	803	18	790	789	-1
Central	544	553	9	541	550	9
Wichita Work Release	241	250	9	249	239	-10
Larned CMHF (Total)	408	384	-24	369	392	23
Central	144	140	-4	150	147	-3
West	264	244	-20	219	245	26
Work Release			0	-		0
Subtotal: KDOC Facilities	9,180	9,137	-43	8,914	9,085	171
Non-KDOC Facilities						
Larned State Hospital	106	106	0	105	108	3
Contract Jail Placement [County]	39	70	31	6	40	34
Contract Placement [Out-of-state]			0	-	-	0
** Labette CCC			0	-	-	0
Johnson County Res. Center (WR)	2	4	2	-	5	5
Subtotal: Non-KDOC Facilities	147	180	33	112	153	41
Total: All Facilities/Placements	9,327	9,317	-10	9,026	9,238	212
Female Population (included in totals above)						
Topeka	666	657	-9	615	644	29
Winfield (WWR)			0			0
Contract Jail (Jo. Co. Res. Center)	2	1	-1	1	1	0
Larned State Hospital	12	12	0	14	13	-1
** Labette CCC			0			0
Subtotal: Females	680	670	-10	630	658	28

* Federal inmates housed at TCF under contract between the Federal Bureau of Prisons and the Kansas Department of Corrections.

** Housing unit closed (or placement option removed) during FY 2009 because of budget constrictions. NCF-East (Stockton) re-opened 9-2010.

*** Average Daily Population (ADP) columns: Because of rounding, the sum of the units might not equal the total for the facility. And, the sum of the facilities might not equal the grand total.

Kansas Department of Corrections
End-of-Month Offender Population Report: January 2012 (Month 7, FY 2012)

Table 2
Total Admission and Release Events: FY 2010, FY 2011, and FY 2012 To-Date

Type of Admission	Total Admissions			Avg. Number Per Month		
	FY 2012			FY 2012		
	FY 2010	FY 2011	To Date	FY 2010	FY 2011	To Date
Admissions by Court Action:						
New Court Commitment	1,883	1,976	1,111	156.9	164.7	158.7
Probation Violator, No New Sentence	1,713	1,623	1,065	142.8	135.3	152.1
Probation Violator, New Sentence	84	91	45	7.0	7.6	6.4
Parole Violator, New Sentence	163	161	75	13.6	13.4	10.7
Parole to Detainer, New Sentence	-	-	9	0.0	0.0	1.3
Conditional Release Violator, New Sentence	-	1	-	0.0	0.1	0.0
Non-violator Return, New Sentence (020-6020)	24	23	8	2.0	1.9	1.1
Subtotal: Court Commitments	3,867	3,875	2,313	322.3	322.9	330.4
Return from Court Appearance	58	71	68	4.8	5.9	9.7
Subtotal: Admission by Court Action	3,925	3,946	2,381	327.1	328.8	340.1
Return by KDOC Action:						
Parole Violator, No New Sentence	1,080	1,021	519	90.0	85.1	74.1
Conditional Release Violator, No New Sentence	3	4	3	0.3	0.3	0.4
Return from Escape	14	10	7	1.2	0.8	1.0
Non-violator Return, No New Sentence (020-6010)	1	2	-	0.1	0.2	0.0
Par/CR/PRS/ Adm. Hold--Poss. Vio.	-	-	-	0.0	0.0	0.0
Subtotal: Return by KDOC Action	1,098	1,037	529	91.5	86.4	75.6
Inter-jurisdictional Transfer:						
Interstate/Federal Compact Received	11	8	3	0.9	0.7	0.4
Kansas Inmate Returned from Another Jurisdiction	25	19	19	2.1	1.6	2.7
Subtotal: Inter-jurisdictional Transfer	36	27	22	3.0	2.3	3.1
Total: All Types of Admission	5,059	5,010	2,932	421.6	417.5	418.9

Note: Totals may be slightly off due to rounding

Month # 7

Source: KDOC computerized report PGM-ISR0445.

Kansas Department of Corrections
End-of-Month Offender Population Report: January 2012 (Month 7, FY 2012)

Table 2 (continued)
Total Admission and Release Events: FY 2010, FY 2011, and FY 2012 To-Date

<u>Type of Release</u>	Total Releases			Avg. Number Per Month		
	FY 2010	FY 2011	FY 2012 To Date	FY 2010	FY 2011	FY 2012 To Date
Release to Post-incarceration Supervision**	3,369	3,419	2,000	280.8	284.9	285.7
Conditional Release	7	12	-	0.6	1.0	0.0
Expiration of Sentence	1,242	1,115	669	103.5	92.9	95.6
Commutation or Pardon	-	-	-	0.0	0.0	0.0
Inter-jurisdictional Transfer:						
Kansas Inmate Released for Housing	13	8	2	1.1	0.7	0.3
Interstate/Fed. Inmate Released to Sending Juris.	13	12	4	1.1	1.0	0.6
Subtotal: Inter-jurisdictional Transfer	26	20	6	2.2	1.7	0.9
Court-ordered Release:						
Probation	6	4	2	0.5	0.3	0.3
Returned Parolee Placed on Probation	-	-	-	0.0	0.0	0.0
Released on Appeal Bond	10	1	1	0.8	0.1	0.1
Released for Court Appearance	92	111	99	7.7	9.3	14.1
Other Final Release by Court Order	19	15	6	1.6	1.3	0.9
Subtotal: Court-ordered Release	127	131	108	10.6	10.9	15.4
Escape	9	7	6	0.8	0.6	0.9
Death (All Causes)	21	20	18	1.8	1.7	2.6
Total: All Types of Release	4,801	4,724	2,807	400.1	393.7	401.0

Month # 7

* Certain types of transactions involving known temporary exits from a correctional facility have been excluded from the body of the table (release to court/return from court--1,175 in FY2010, 1,268 in FY2011, and 650 in FY2012).

** Includes releases to post-incarceration supervision via the provisions of the Kansas Sentencing Guidelines Act of July 1993, as well as parole releases by action of the Kansas Prisoner Review Board.

Note: Totals may be slightly off due to rounding

Kansas Department of Corrections
 End-of-Month Offender Population Report: January 2012 (Month 7, FY 2012)
Table 3
Distribution of Inmate Population by Type of Latest Admission:
Comparison of December 31st, 2011 and January 31st, 2012

Note. The information presented here pertains to the inmate population on the specified dates and not to admissions during the period.

Type of Admission [Latest Admission Per Master Record]		*Number of Inmates		
Admission Code [OMIS]	Admission Description	12/31/2011	1/31/2012	Difference Dec. Minus Jan.
Admission by Court Action:				
010-1010	New Court Commitment	6,086	6,087	1
010-2010	Probation Violator, No New Sentence	1,674	1,658	(16)
010-2020	Probation Violator, New Sentence	213	211	(2)
020-1020 & 020-1025	Parole Violator, New Sentence	661	661	-
020-2020	Conditional Release Violator, New Sentence	32	32	-
020-6020	Non-violator Return, New Sentence	24	25	1
Subtotal: Latest Adm. as Court Commitment		8,690	8,674	(16)
Return by KDOC Action:				
020-1010	Parole Violator, No New Sentence	507	514	7
020-2010	Conditional Release Violator, No New Sentence	28	28	-
020-5010	Return from Escape	1	1	-
020-6010	Non-violator Return, No New Sentence			-
040-1010	Par/CR/PRS/ Adm. Hold--Poss. Vio.			-
Subtotal: Latest Adm. as Return by KDOC Action		536	543	7
Inter-jurisdictional Transfer:				
010-4010	Interstate/Federal Compact Received	72	72	-
020-3010	Kansas Inmate Returned from Another Jurisdiction	28	29	1
Subtotal: Latest Adm. as Inter-jurisdictional Transfer		100	101	1
Total: All Types of Admission		9,326	9,318	(8)

*The SAS end-of-month population figure sometimes varies slightly from the OMIS population report because the SAS file is generated at a different time of day than the OMIS population report. (In this case it differs by 1 for December and 1 for January).