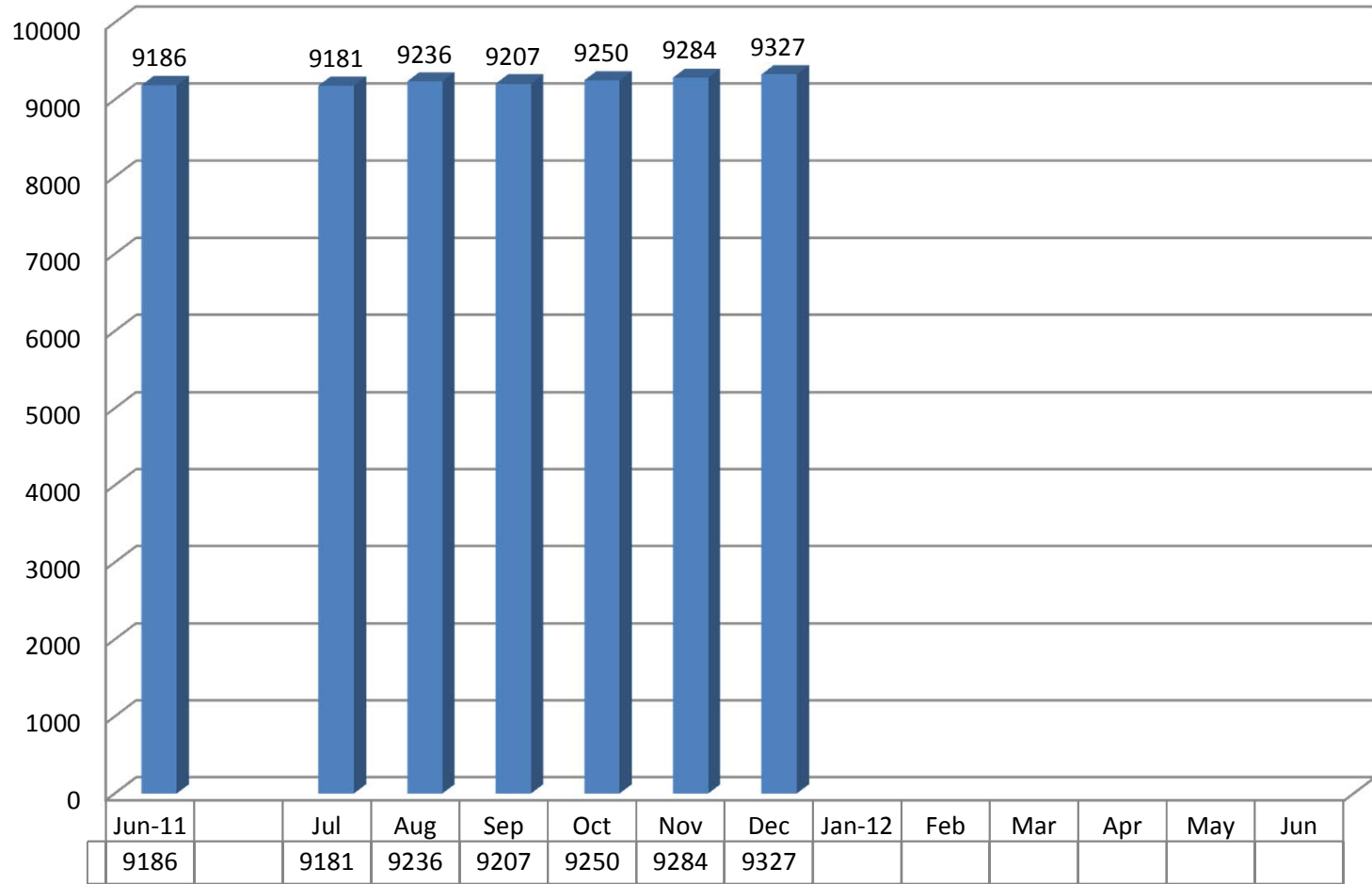


**Kansas Department of Corrections  
Graphic Highlights -- Monthly Offender Population Report (December 2011)**

**End-of-Month Inmate Population: FY 2012 To-Date**



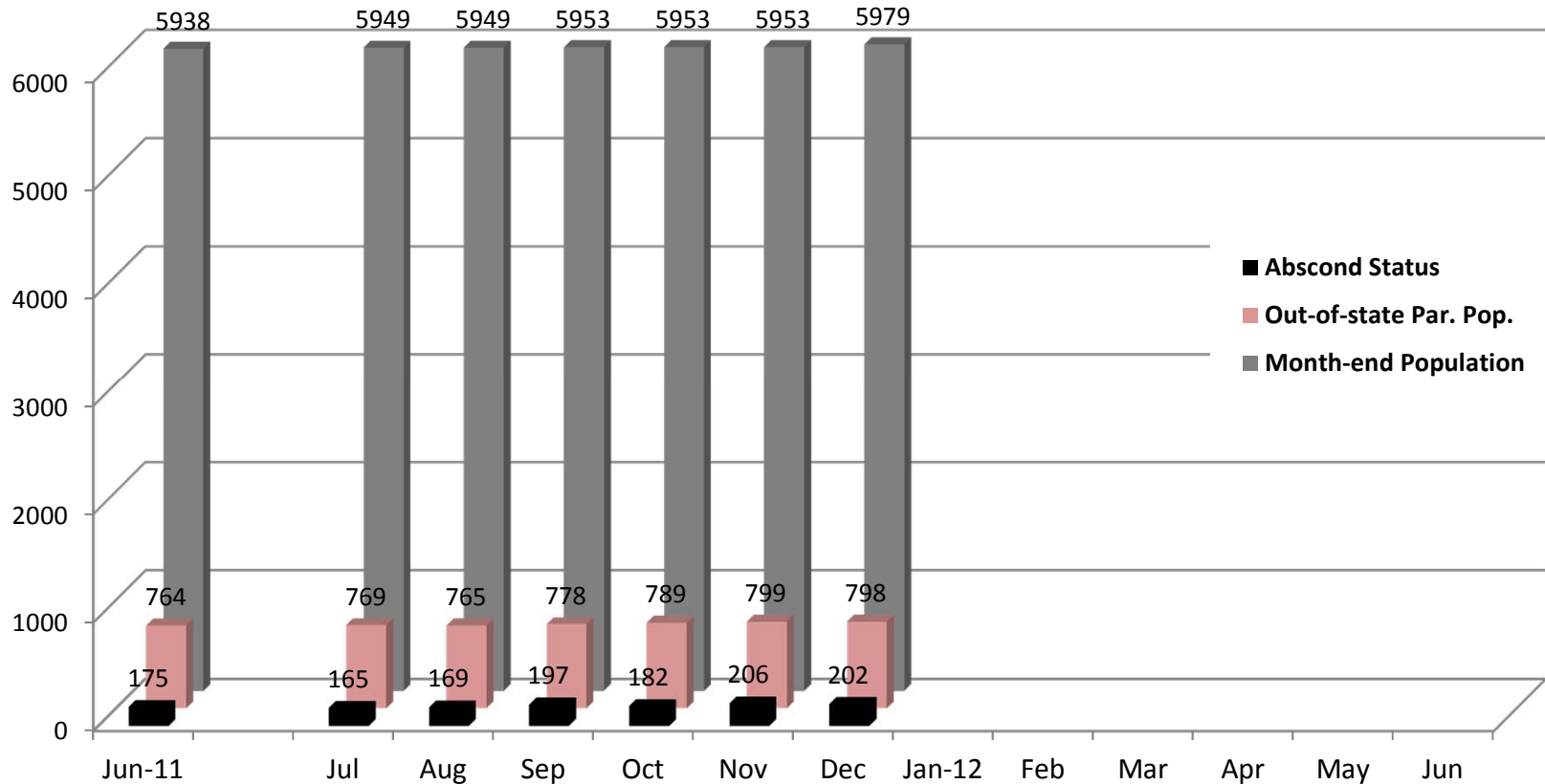
Change from Prev. Mo.  
Change from June, 2011

-5	55	-29	43	34	43
-5	50	21	64	98	141

*\*Figures reflect the total inmate population (combined DOC and Non-DOC facility populations)*

**Kansas Department of Corrections  
Graphic Highlights -- Monthly Offender Population Report (December 2011)**

**Components of the End-of-Month Population Under Post-Incarceration Management:  
FY2012 To-Date**



In-State Population  
(Change):

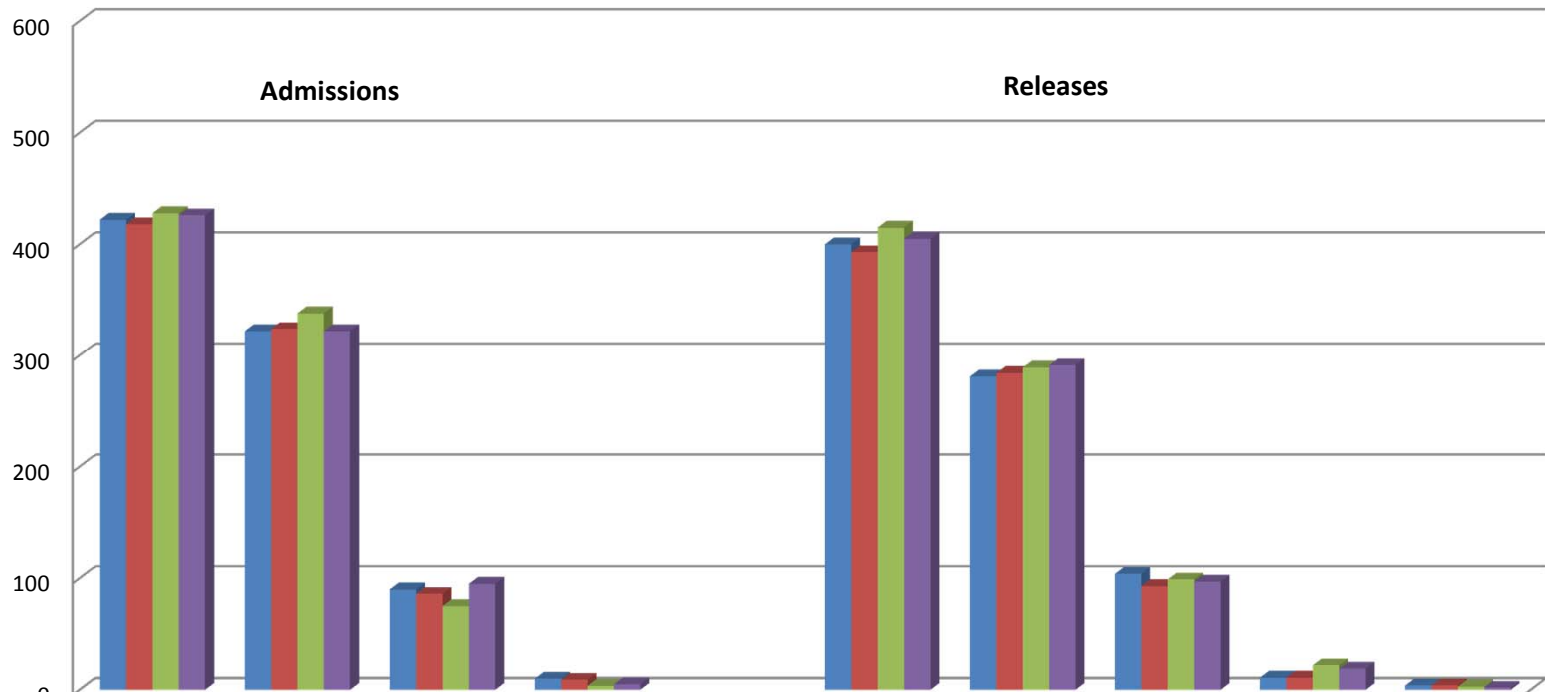
Change from Prev. Month	11	0	4	0	0	26
Change from June, 2011	11	11	15	15	15	41

*\*In-state population is comprised of Kansas offenders supervised in Kansas and out-of-state offenders supervised in Kansas. Out-of-state population is comprised of Kansas offenders supervised out-of-state. Those on abscond status have active warrants (whereabouts unknown).*

Kansas Department of Corrections

Graphic Highlights -- Monthly Offender Population Report (December 2011)

**Number of Admission and Release Events Per Month (by Major Category): Comparison of FY2010, FY2011, and FY2012 To-Date Monthly Averages with Current Month's Totals**



	All Types	Court Commitment	Condition Violator	Other		All Types	To Post-incar. Sup.*	Condition Violator	Court **	Other
FY2010 Mo. Avg.	422	322	90	10		400	281	104	11	4
FY2011 Mo. Avg.	418	324	86	9		393	284	93	11	4
FY2012 Mo. Avg.	428	338	75	4		415	289	99	22	3
Mo. of December 2011	426	322	95	5		405	291	97	19	2

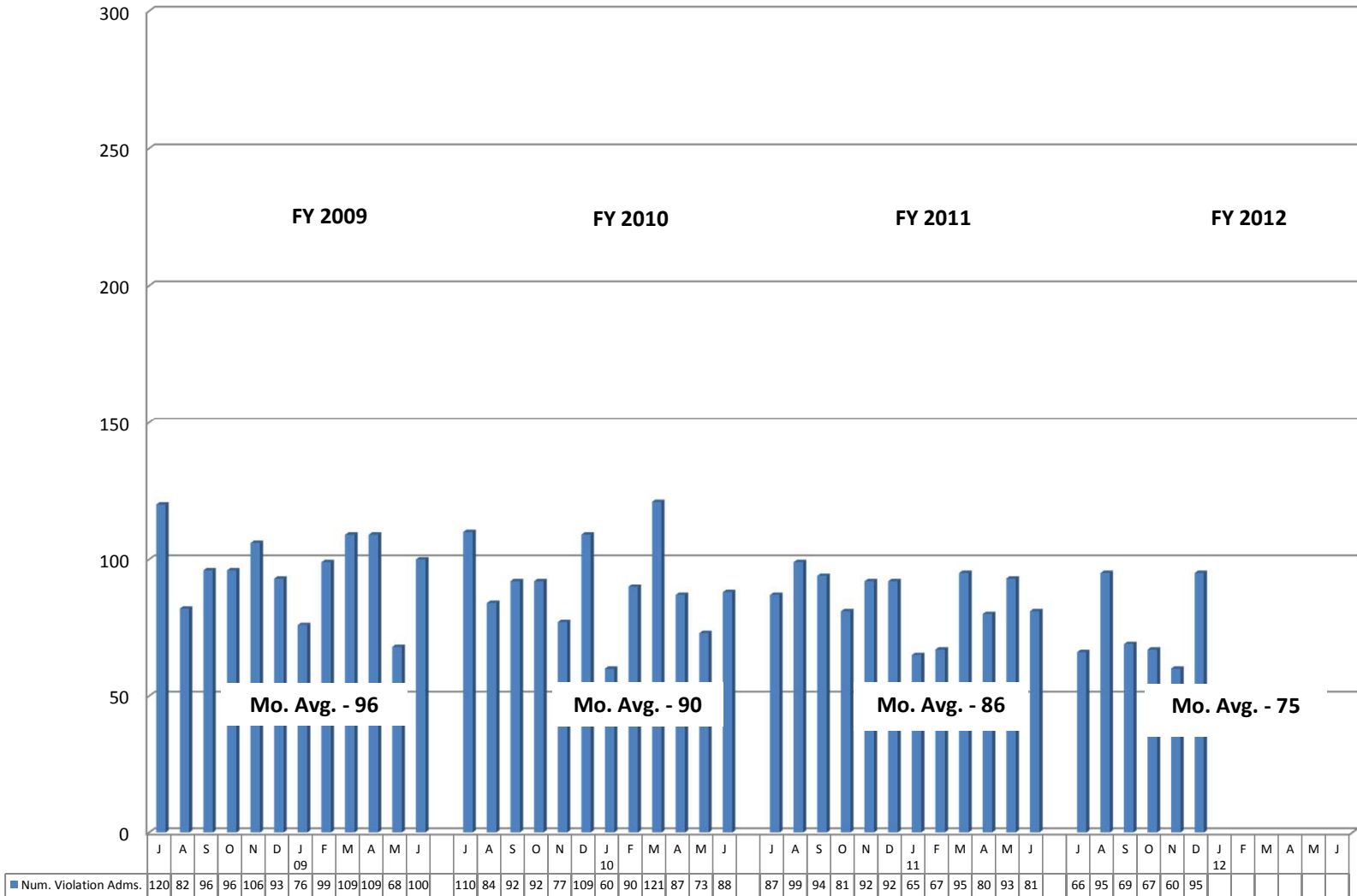
\* Includes releases to supervision via the provisions of the Kansas Sentencing Guidelines Act of 1993, as well as parole releases by action of the Kansas Prisoner Review Board.

\*\*Figure can be a negative number for a particular month [since it is based on the total number whose last exit for the period (fiscal year to date) was via "out-to-court" minus the previous month's total, which can be a smaller or greater number].

Kansas Department of Corrections

Graphic Highlights -- Monthly Offender Population Report (December 2011)

**Number of Return Admissions for Condition Violations by Month: FY2009 - FY2012 To-Date\***



\*Total number of admissions for violation of the conditions of release (no new sentence).

Kansas Department of Corrections  
End-of-Month Offender Population Report: December 2011 (Month 6, FY 2012)

**Table 1**  
**Number of Inmates Confined and Average Daily Population: FY 2011 and FY 2012**

Correctional Facility	Number Confined			Average Daily Population***		
	11/30/2011	12/31/2011	Change	FY 2011	FY 2012	Change
<b>KDOC Facilities</b>						
<b>Lansing: Total</b>	<b>2,382</b>	<b>2,422</b>	<b>40</b>	<b>2,368</b>	<b>2,414</b>	<b>46</b>
Central	1,755	1,806	51	1,749	1,793	44
East	627	616	-11	619	621	2
** South (Osawatomie)	-	-	0	-	-	0
<b>Hutchinson: Total</b>	<b>1,874</b>	<b>1,869</b>	<b>-5</b>	<b>1,863</b>	<b>1,846</b>	<b>-17</b>
Central	1,096	1,090	-6	1,086	1,067	-19
East	496	496	0	493	496	3
South	238	237	-1	238	239	1
Work Release	44	46	2	46	44	-2
<b>El Dorado: Total</b>	<b>1,359</b>	<b>1,365</b>	<b>6</b>	<b>1,281</b>	<b>1,338</b>	<b>57</b>
Central (General Population)	983	985	2	937	974	37
Central - RDU	376	380	4	344	364	20
** East (Toronto)	-	-	0	-	-	0
** North	-	-	0	-	-	0
<b>Topeka: Total</b>	<b>660</b>	<b>666</b>	<b>6</b>	<b>615</b>	<b>642</b>	<b>27</b>
Central (General Population)	582	592	10	597	573	-24
RDU	56	53	-3	30	48	18
* Federal Inmates	5	5	0	7	6	-1
Work Release	17	16	-1	18	15	-3
<b>Norton: Total</b>	<b>856</b>	<b>845</b>	<b>-11</b>	<b>808</b>	<b>840</b>	<b>32</b>
Central	729	720	-9	713	717	4
** East (Stockton) <i>re-opened 9-2010</i>	127	125	-2	95	123	28
<b>Ellsworth</b>	<b>818</b>	<b>820</b>	<b>2</b>	<b>820</b>	<b>819</b>	<b>-1</b>
General Population	818	820	2	820	819	-1
Work Release			0	-		0
<b>Winfield: Total</b>	<b>782</b>	<b>785</b>	<b>3</b>	<b>790</b>	<b>788</b>	<b>-2</b>
Central	551	544	-7	541	550	9
Wichita Work Release	231	241	10	249	238	-11
<b>Larned CMHF (Total)</b>	<b>400</b>	<b>408</b>	<b>8</b>	<b>369</b>	<b>391</b>	<b>22</b>
Central	146	144	-2	150	148	-2
West	254	264	10	219	243	24
Work Release			0	-	-	0
<b>Subtotal: KDOC Facilities</b>	<b>9,131</b>	<b>9,180</b>	<b>49</b>	<b>8,914</b>	<b>9,078</b>	<b>164</b>
<b>Non-KDOC Facilities</b>						
Larned State Hospital	107	106	-1	105	108	3
Contract Jail Placement [County]	43	39	-4	6	38	32
Contract Placement [Out-of-state]			0	-	-	0
** Labette CCC			0	-	-	0
Johnson County Res. Center (WR)	3	2	-1	-	6	6
<b>Subtotal: Non-KDOC Facilities</b>	<b>153</b>	<b>147</b>	<b>-6</b>	<b>112</b>	<b>152</b>	<b>40</b>
<b>Total: All Facilities/Placements</b>	<b>9,284</b>	<b>9,327</b>	<b>43</b>	<b>9,026</b>	<b>9,230</b>	<b>204</b>
<b>Female Population (included in totals above)</b>						
Topeka	632	632	0	623	627	4
Winfield (WWR)			0	-		0
Contract Jail (Jo. Co. Res. Center)			0	1	1	0
Larned State Hospital	109	109	0	14	14	0
** Labette CCC			0	-	-	0
<b>Subtotal: Females</b>	<b>741</b>	<b>741</b>	<b>0</b>	<b>638</b>	<b>642</b>	<b>4</b>

\* Federal inmates housed at TCF under contract between the Federal Bureau of Prisons and the Kansas Department of Corrections.

\*\* Housing unit closed (or placement option removed) during FY 2009 because of budget constrictions. NCF-East (Stockton) re-opened 9-2010.

\*\*\* Average Daily Population (ADP) columns: Because of rounding, the sum of the units might not equal the total for the facility. And, the sum of the facilities might not equal the grand total.

Kansas Department of Corrections  
End-of-Month Offender Population Report: December 2011 (Month 6, FY 2012)

**Table 2**  
**Total Admission and Release Events: FY 2010, FY 2011, and FY 2012 To-Date**

<u>Type of Admission</u>	Total Admissions			Avg. Number Per Month		
	FY 2010	FY 2011	FY 2012 To Date	FY 2010	FY 2011	FY 2012 To Date
<b>Admissions by Court Action:</b>						
New Court Commitment	1,883	1,976	970	156.9	164.7	161.7
Probation Violator, No New Sentence	1,713	1,623	935	142.8	135.3	155.8
Probation Violator, New Sentence	84	91	40	7.0	7.6	6.7
Parole Violator, New Sentence	163	161	67	13.6	13.4	11.2
Parole to Detainer, New Sentence	-	-	7	0.0	0.0	1.2
Conditional Release Violator, New Sentence	-	1	-	0.0	0.1	0.0
Non-violator Return, New Sentence (020-6020)	24	23	6	2.0	1.9	1.0
<b>Subtotal: Court Commitments</b>	<b>3,867</b>	<b>3,875</b>	<b>2,025</b>	<b>322.3</b>	<b>322.9</b>	<b>337.5</b>
Return from Court Appearance	58	71	67	4.8	5.9	11.2
<b>Subtotal: Admission by Court Action</b>	<b>3,925</b>	<b>3,946</b>	<b>2,092</b>	<b>327.1</b>	<b>328.8</b>	<b>348.7</b>
<b>Return by KDOC Action:</b>						
Parole Violator, No New Sentence	1,080	1,021	443	90.0	85.1	73.8
Conditional Release Violator, No New Sentence	3	4	3	0.3	0.3	0.5
Return from Escape	14	10	6	1.2	0.8	1.0
Non-violator Return, No New Sentence (020-6010)	1	2	-	0.1	0.2	0.0
Par/CR/PRS/ Adm. Hold--Poss. Vio.	-	-	-	0.0	0.0	0.0
<b>Subtotal: Return by KDOC Action</b>	<b>1,098</b>	<b>1,037</b>	<b>452</b>	<b>91.5</b>	<b>86.4</b>	<b>75.3</b>
<b>Inter-jurisdictional Transfer:</b>						
Interstate/Federal Compact Received	11	8	3	0.9	0.7	0.5
Kansas Inmate Returned from Another Jurisdiction	25	19	18	2.1	1.6	3.0
<b>Subtotal: Inter-jurisdictional Transfer</b>	<b>36</b>	<b>27</b>	<b>21</b>	<b>3.0</b>	<b>2.3</b>	<b>3.5</b>
<b>Total: All Types of Admission</b>	<b>5,059</b>	<b>5,010</b>	<b>2,565</b>	<b>421.6</b>	<b>417.5</b>	<b>427.5</b>

Note: Totals may be slightly off due to rounding

Month # 6

Source: KDOC computerized report PGM-ISR0445.

Kansas Department of Corrections  
End-of-Month Offender Population Report: December 2011 (Month 6, FY 2012)

**Table 2 (continued)**  
**Total Admission and Release Events: FY 2010, FY 2011, and FY 2012 To-Date**

<u>Type of Release</u>	Total Releases			Avg. Number Per Month		
	FY 2010	FY 2011	FY 2012 To Date	FY 2010	FY 2011	FY 2012 To Date
<b>Release to Post-incarceration Supervision**</b>	<b>3,369</b>	<b>3,419</b>	<b>1,747</b>	<b>280.8</b>	<b>284.9</b>	<b>291.2</b>
<b>Conditional Release</b>	<b>7</b>	<b>12</b>	<b>-</b>	<b>0.6</b>	<b>1.0</b>	<b>0.0</b>
<b>Expiration of Sentence</b>	<b>1,242</b>	<b>1,115</b>	<b>581</b>	<b>103.5</b>	<b>92.9</b>	<b>96.8</b>
<b>Commutation or Pardon</b>	<b>-</b>	<b>-</b>	<b>-</b>	<b>0.0</b>	<b>0.0</b>	<b>0.0</b>
<b>Inter-jurisdictional Transfer:</b>						
Kansas Inmate Released for Housing	13	8	2	1.1	0.7	0.3
Interstate/Fed. Inmate Released to Sending Juris.	13	12	4	1.1	1.0	0.7
<b>Subtotal: Inter-jurisdictional Transfer</b>	<b>26</b>	<b>20</b>	<b>6</b>	<b>2.2</b>	<b>1.7</b>	<b>1.0</b>
<b>Court-ordered Release:</b>						
Probation	6	4	1	0.5	0.3	0.2
Returned Parolee Placed on Probation	-	-	-	0.0	0.0	0.0
Released on Appeal Bond	10	1	1	0.8	0.1	0.2
Released for Court Appearance	92	111	66	7.7	9.3	11.0
Other Final Release by Court Order	19	15	6	1.6	1.3	1.0
<b>Subtotal: Court-ordered Release</b>	<b>127</b>	<b>131</b>	<b>74</b>	<b>10.6</b>	<b>10.9</b>	<b>12.3</b>
<b>Escape</b>	<b>9</b>	<b>7</b>	<b>6</b>	<b>0.8</b>	<b>0.6</b>	<b>1.0</b>
<b>Death (All Causes)</b>	<b>21</b>	<b>20</b>	<b>14</b>	<b>1.8</b>	<b>1.7</b>	<b>2.3</b>
<b>Total: All Types of Release</b>	<b>4,801</b>	<b>4,724</b>	<b>2,428</b>	<b>400.1</b>	<b>393.7</b>	<b>404.7</b>

Month # 6

\* Certain types of transactions involving known temporary exits from a correctional facility have been excluded from the body of the table (release to court/return from court--1,175 in FY2010, 1,268 in FY2011, and 548 in FY2012).

\*\* Includes releases to post-incarceration supervision via the provisions of the Kansas Sentencing Guidelines Act of July 1993, as well as parole releases by action of the Kansas Prisoner Review Board.

Note: Totals may be slightly off due to rounding

Kansas Department of Corrections  
End-of-Month Offender Population Report: December 2011 (Month 6, FY 2012)

**Table 2 (continued)**  
**Total Admission and Release Events: FY 2010, FY 2011, and FY 2012 To-Date**

<u>Type of Release</u>	Total Releases			Avg. Number Per Month		
	FY 2010	FY 2011	FY 2012 To Date	FY 2010	FY 2011	FY 2012 To Date
<b>Release to Post-incarceration Supervision**</b>	<b>3,369</b>	<b>3,419</b>	<b>1,747</b>	<b>280.8</b>	<b>284.9</b>	<b>291.2</b>
<b>Conditional Release</b>	<b>7</b>	<b>12</b>	<b>-</b>	<b>0.6</b>	<b>1.0</b>	<b>0.0</b>
<b>Expiration of Sentence</b>	<b>1,242</b>	<b>1,115</b>	<b>581</b>	<b>103.5</b>	<b>92.9</b>	<b>96.8</b>
<b>Commutation or Pardon</b>	<b>-</b>	<b>-</b>	<b>-</b>	<b>0.0</b>	<b>0.0</b>	<b>0.0</b>
<b>Inter-jurisdictional Transfer:</b>						
Kansas Inmate Released for Housing	13	8	2	1.1	0.7	0.3
Interstate/Fed. Inmate Released to Sending Juris.	13	12	4	1.1	1.0	0.7
<b>Subtotal: Inter-jurisdictional Transfer</b>	<b>26</b>	<b>20</b>	<b>6</b>	<b>2.2</b>	<b>1.7</b>	<b>1.0</b>
<b>Court-ordered Release:</b>						
Probation	6	4	1	0.5	0.3	0.2
Returned Parolee Placed on Probation	-	-	-	0.0	0.0	0.0
Released on Appeal Bond	10	1	1	0.8	0.1	0.2
Released for Court Appearance	92	111	66	7.7	9.3	11.0
Other Final Release by Court Order	19	15	6	1.6	1.3	1.0
<b>Subtotal: Court-ordered Release</b>	<b>127</b>	<b>131</b>	<b>74</b>	<b>10.6</b>	<b>10.9</b>	<b>12.3</b>
<b>Escape</b>	<b>9</b>	<b>7</b>	<b>6</b>	<b>0.8</b>	<b>0.6</b>	<b>1.0</b>
<b>Death (All Causes)</b>	<b>21</b>	<b>20</b>	<b>14</b>	<b>1.8</b>	<b>1.7</b>	<b>2.3</b>
<b>Total: All Types of Release</b>	<b>4,801</b>	<b>4,724</b>	<b>2,428</b>	<b>400.1</b>	<b>393.7</b>	<b>404.7</b>

Month # 6

\* Certain types of transactions involving known temporary exits from a correctional facility have been excluded from the body of the table (release to court/return from court--1,175 in FY2010, 1,268 in FY2011, and 548 in FY2012).

\*\* Includes releases to post-incarceration supervision via the provisions of the Kansas Sentencing Guidelines Act of July 1993, as well as parole releases by action of the Kansas Prisoner Review Board.

Note: Totals may be slightly off due to rounding