

Transforming Lives through Communication

802

Responses

15:58

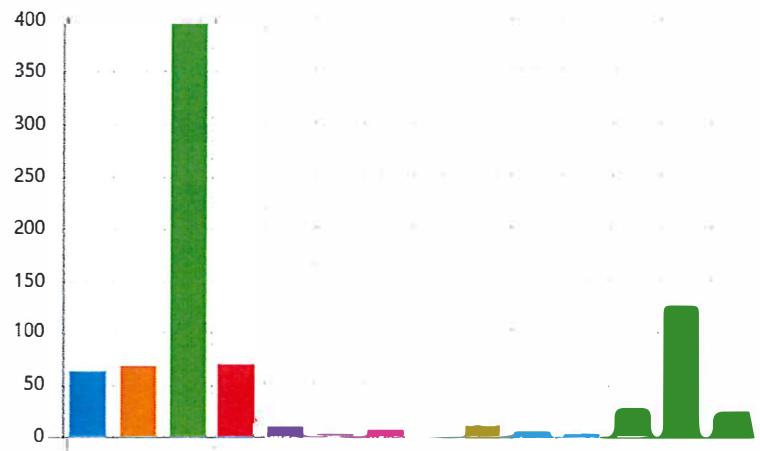
Average time to complete

Closed

Status

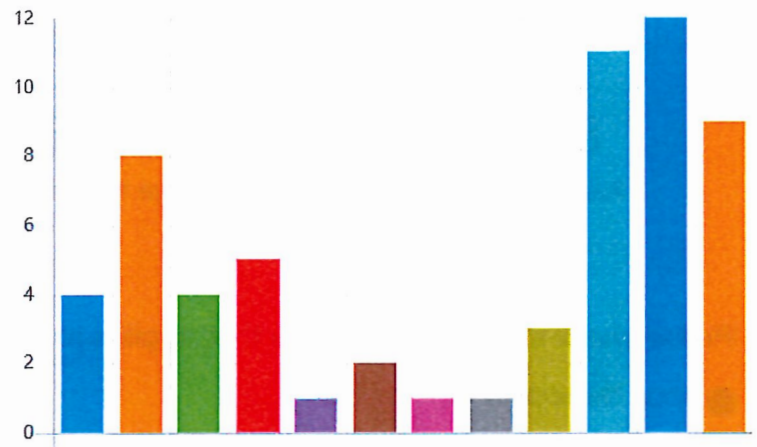
1. Please check the one item below that applies to you as a respondent of this survey.

● KDOC Central Office	61
● KDOC Adult/Juvenile Commu...	67
● KDOC Facility	396
● County Adult/Juvenile Comm...	70
● Resident/Offender	10
● Prior Resident/Offender	1
● Mentor	5
● Media	0
● Crime victim	11
● Volunteer	3
● Community member	2
● Contract staff	28
● Family	125
● Other	23



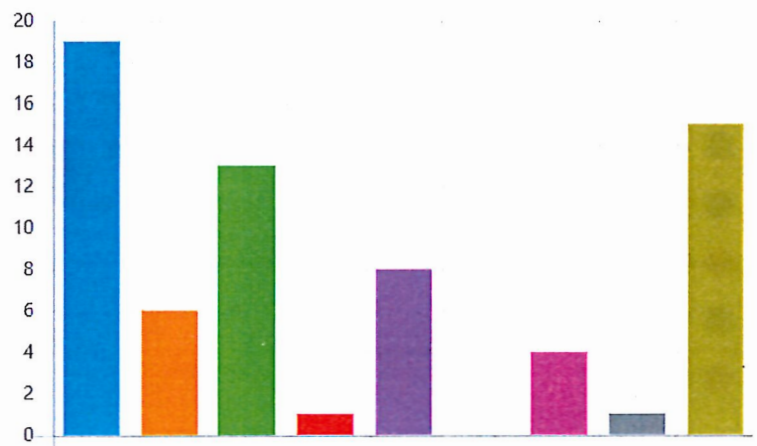
2. If you chose Central Office in response to #1; What is your job role within the organization?

Administration	4
Victim Services	8
Fiscal	4
Information Technology (IT)	5
Human Resources	1
Legal	2
PRB	1
EAI	1
Research	3
Reentry	11
Adult/Juvenile Community ba...	12
Other	9



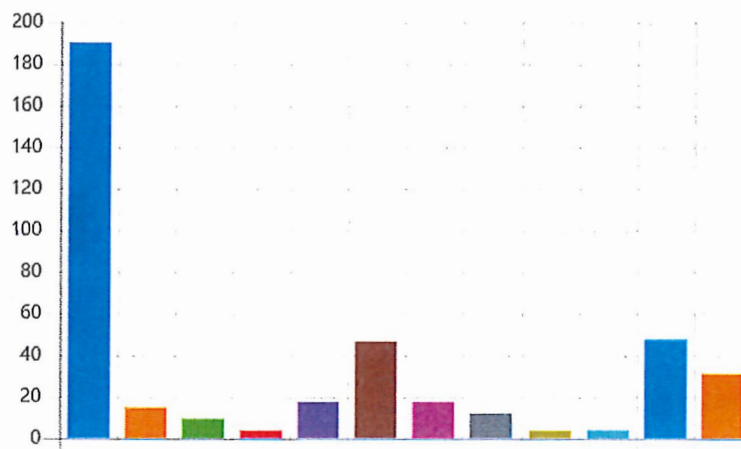
3. If you chose Adult/Juvenile Community Based Services in response to #1; What is your job role within the organization?

Parole officer (PO I)	19
Parole officer II (PO II)	6
Director/Deputy Director/Paro...	13
Reentry	1
Program Provider	8
Information Technology (IT)	0
Victim Services	4
Special Agent	1
Other	15



4. If you chose Facility in response to #1; what is your job role within the organization?

Corrections Officer (any level)	190
Facilities Maintenance	15
Warden/Deputy Warden	9
Classification Administrator	4
Unit Team Manager	17
Unit Team Counselor	46
Reentry	17
Program Provider	12
Victim Services	4
Information Technology (IT)	4
Administrative Staff	47
Other	31



5. How frequently do you view the following?

■ Daily
 ■ Weekly
 ■ Monthly
 ■ Never
 ■ Didn't know it existed

KDOC Public Website



KDOC Employee (Intranet) Website



KDOC Facebook Page



KDOC Twitter



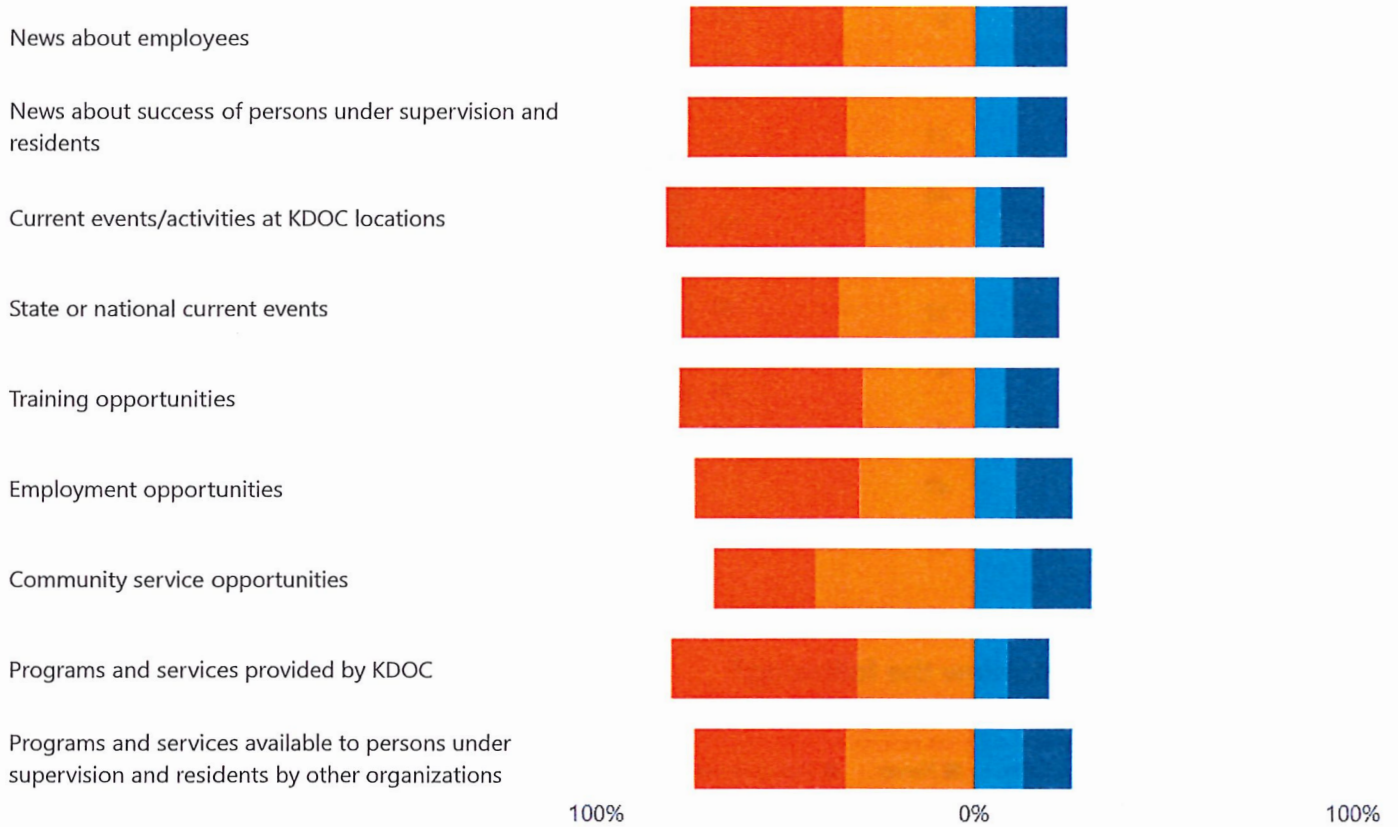
100%

0%

100%

6. What content from these sites do you find most useful and/or interesting?

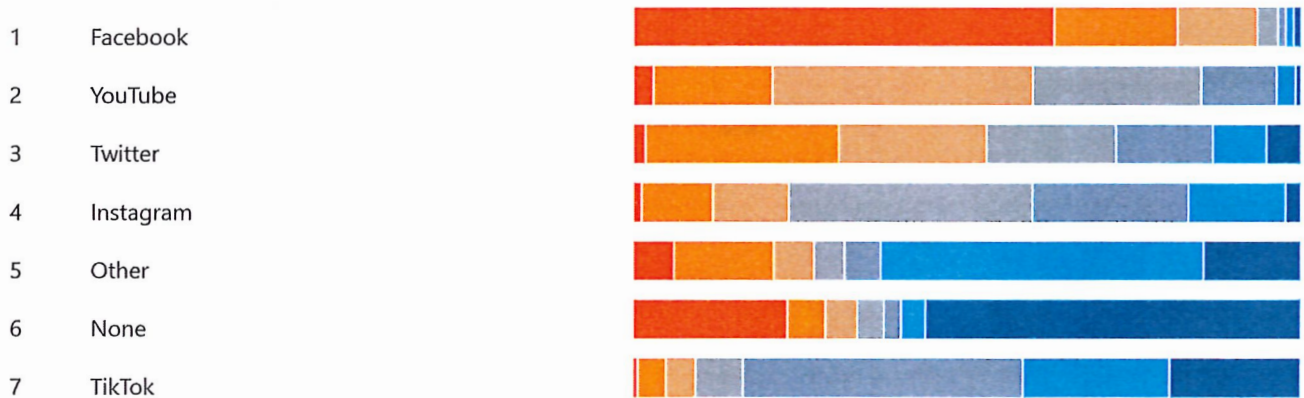
Useful Neutral Not Useful N/A



7. Of these social media sites, please rank your preferences, in order of use or importance, for KDOC to use when communicating with you?

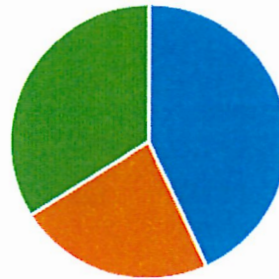
Rank Options

First choice Last choice



8. In your opinion, is the use of social media by KDOC a good investment of public resources?

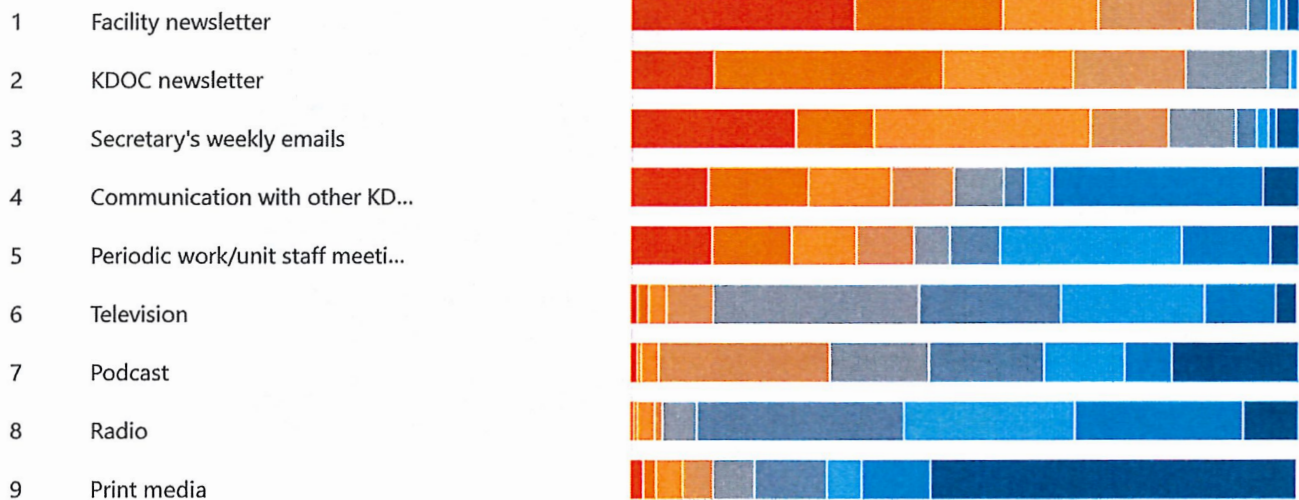
Yes	346
No	184
Neutral	272



9. Of these communication tools, other than social media, what are your top three preferences, in order of importance, for KDOC to use to communicate with you?

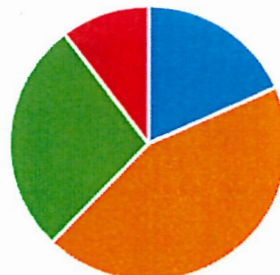
Rank Options

First choice Last choice

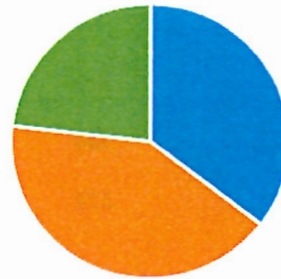
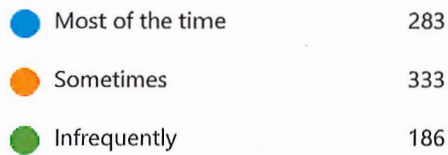


10. How likely is our current communication content to increase your knowledge of, or influence your impression of, KDOC as a public agency?

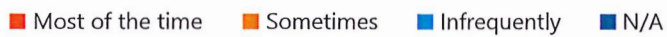
Very likely	147
Somewhat likely	352
Unlikely	220
Don't view KDOC content curr...	83



11. Do you get the information and updates from KDOC when you need it?



12. Does KDOC communicate adequate information about the following?



Policy



Practices



Programming (treatment, educational, employment etc)



Critical changes



Goals

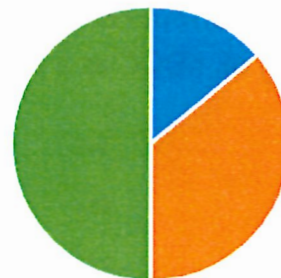
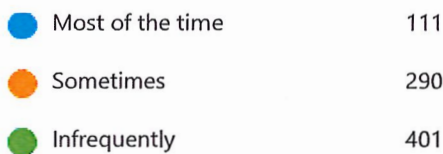


100%

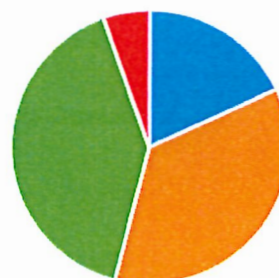
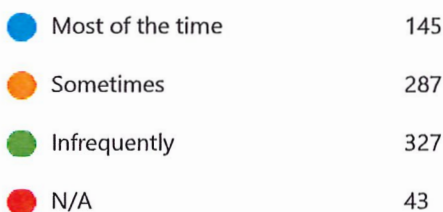
0%

100%

13. Do you feel your input/feedback helps KDOC meet its goals/objectives?

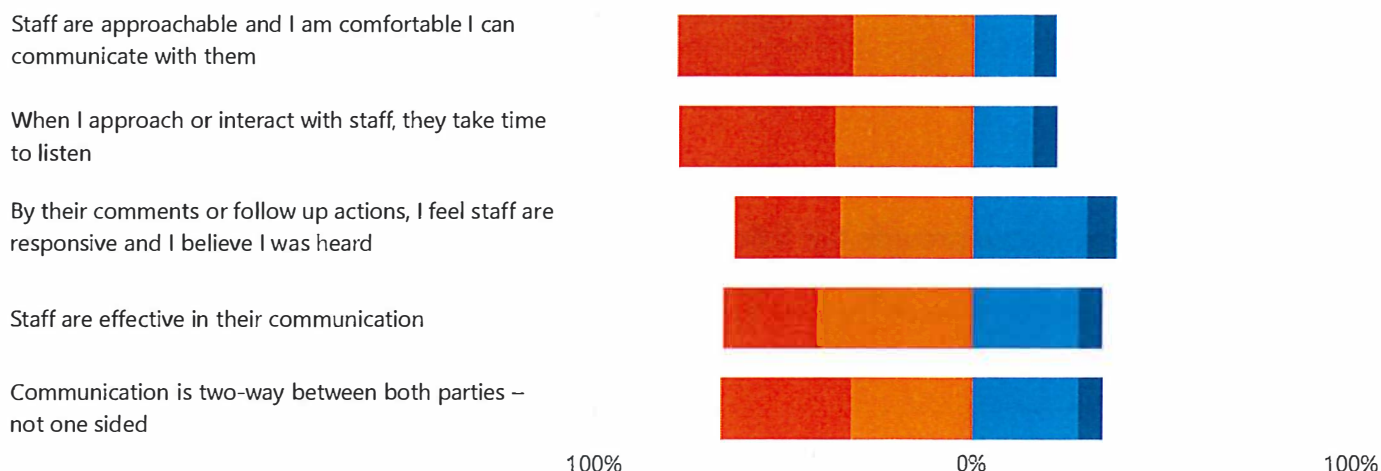


14. Overall, do you feel communication with our staff is effective?



15. Thinking of all communication with KDOC staff over the last 90 days, please read the following statements about staff communication with you and rate them based on your experience.

■ Most of the time
 ■ Sometimes
 ■ Infrequently
 ■ N/A

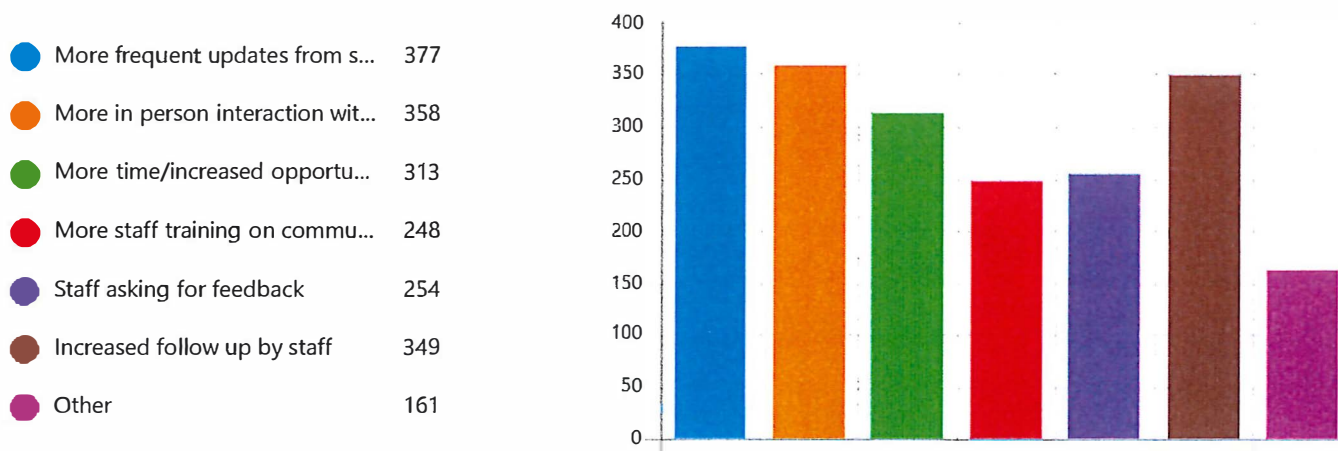


16. Thinking about your responses to the above questions; please tell us what you feel is and is not working.

533

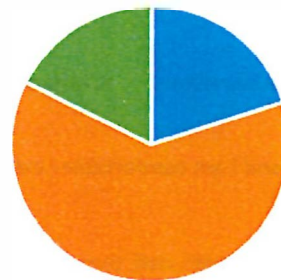
Responses (omitted from publication to maintain confidentiality)

17. What would improve communication with KDOC staff?



18. If there were an opportunity to participate in a future group to give input to KDOC on communication, would you be interested in participating?

● Yes	161
● No	500
● Maybe	141



19. If Yes (or maybe), please provide the following; Name, email and phone number, in the box below

302

Responses (omitted from publication to maintain confidentiality)