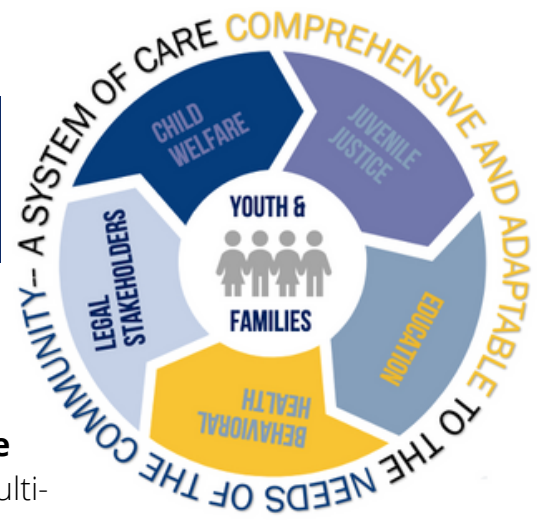


# THE KANSAS CROSSOVER STATE POLICY TEAM



## A Multi-System and Multi-Agency Collaboration

In October 2019, Kansas began working with Georgetown University's Center for Youth Justice (CYJ) to implement the Crossover Youth Practice Model. This is a multi-system and multi-agency collaboration at the state level used to identify and ameliorate barriers to addressing crossover in Kansas.



## Target Population

**Crossover Youth:** A young person age 10 and older with any level of concurrent involvement with the child welfare and juvenile justice systems.

- **"Involvement"** in the juvenile justice system includes, but is not limited to, court-ordered community supervision, Immediate Intervention Programs (IIPs), and youth placed in detention and correctional facilities .
- **"Involvement"** in the child welfare system includes, but is not limited to, out of home placement, or participation in preventative services.



## Partners in the Kansas CYPM Effort

The Office of Judicial Administration, the Kansas Department for Children and Families, and the Kansas Department of Corrections are working alongside representatives from the mental health and substance abuse field, education, courts, prosecutors, defense attorneys, law enforcement, foster care providers, and young adults and family members with lived experience to identify solutions to the issues that arise around crossover cases. Agency and organization partners in the effort include:

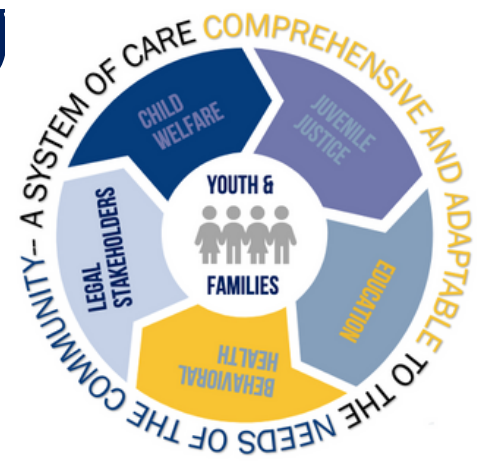
- 29th Judicial District Wyandotte County Court Services
- 4th Judicial District Community Corrections
- Brown County Sheriff's Department
- Cornerstones of Care
- Court Appointed Special Advocates (CASA) of Johnson and Wyandotte Counties
- DCCCA, Inc.
- EmberHope
- Family First Prevention Services Act (FFPSA)
- Family Preservation
- Kansas Department for Children and Families
- Kansas Department of Corrections
- Kansas Health Institute (KHI)
- Kansas State Department of Education
- Children's Alliance
- KVC Kansas.
- Office of Judicial Administration
- Sedgwick County District Attorney's Office
- St. Francis Ministries
- TFI Family Services
- Kansas Family Advisory Network (KFAN), Inc.

## VISION STATEMENT

The Kansas Crossover State Policy Team fosters a system of care inclusive of child welfare, juvenile justice, education, mental and behavioral health, and legal stakeholders that is **comprehensive and adaptable** to meet the unique needs of communities. **The intentional and genuine partnership among these agencies strengthens the system of care** by enabling information sharing, striving for continuous improvement, and **purposely incorporating the voices of youth and families into all decisions** affecting themselves and their communities.

# GOALS OF THE COLLABORATIVE

The CYPM collaborative has identified three domains within which to address crossover in Kansas. These areas of focus include information sharing and data collection, prevention, and service quality and accessibility.



## Information Sharing and Data Collection

**The Kansas State Policy Team is seeking to improve data collection and information sharing across key partners** through examination of existing agreements among agencies and organizations, review of current legal code related to information sharing, and identification of barriers to collecting data and interagency collaboration. The team is working to improve information collection and sharing by establishing new partner agreements, developing information-sharing legislation, and creating streamlined processes for collection and sharing.

## Prevention

**The Kansas State Policy Team prevention efforts are dedicated to identifying the ways in which Kansas youth cross over from one system to another** and developing goals and strategies necessary to reduce the occurrence of crossover. The team is mapping out steps needed to achieve its defined goals and strategies to prevent youth from moving across systems.

## Service Quality and Accessibility

**Once the CYPM is implemented within communities,** the Kansas State Policy Team will work to develop and address goals that are specific to the service needs of individual jurisdictions.

## WHERE WE ARE WORKING

Since the Kansas State Policy Team began its CYPM efforts in 2019, it has been laying the foundation to support counties in implementing the Crossover Youth Practice Model. The CYPM has been fully implemented in Sedgwick, Shawnee and Montgomery Counties and is now being expanded to Saline, Franklin and Atchison Counties.

In addition to laying the groundwork for communities to begin implementing the CYPM, the Kansas State Policy Team has also been identifying ways to raise awareness of their CYPM efforts across the state. It hopes to spread awareness of the CYPM and pave the way for other communities to improve outcomes for Kansas' crossover youth.

To learn more about crossover youth and the crossover efforts in Kansas, contact the Crossover Coordinators leading the work across the state:

- **Ashley Brown**, Kansas Department for Children and Families, [Ashley.brown@ks.gov](mailto:Ashley.brown@ks.gov)
- **Sandra Booker**, Kansas Department of Corrections, [Sandra.Booker1@ks.gov](mailto:Sandra.Booker1@ks.gov)
- **Daniel Olson**, Office of Judicial Administration, [daniel.olson@kscourts.gov](mailto:daniel.olson@kscourts.gov)