

Statewide Month End Population: Placements for Youth in the Custody of DOC on the Last Day of Each Month

Youth are placed in DOC custody by the court and may be placed at home, with relatives, in a juvenile correctional facility or in another type of community placement. Data below is summary information for youth in DOC custody on the last day of a month with comparative data from previous years.

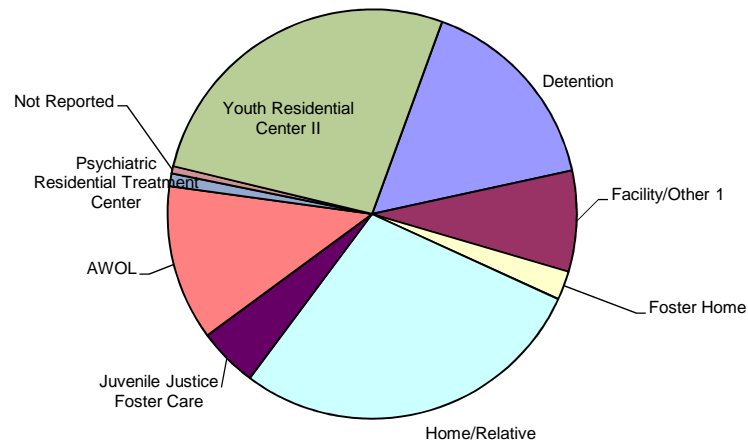
Placement Summary

State Fiscal Year 2016	Jul	Aug	Sep	Oct	Nov	Dec	Jan	Feb	Mar	Apr	May	Jun	FY16 Avg.	FY16 Plcmt Avg As % of Total
Detention	156	128	148	162	151	159	152	133	125	134	132	129	142.4	16.0%
Facility/Other ¹	77	72	82	83	82	76	66	72	65	64	58	53	70.8	8.0%
Foster Home	22	22	21	19	19	16	21	20	23	21	19	20	20.3	2.3%
Home/Relative	265	241	249	241	239	265	263	259	257	248	261	240	252.3	28.4%
Juvenile Justice Foster Care	36	42	43	48	47	44	46	43	44	39	36	34	41.8	4.7%
AWOL	98	103	119	122	120	113	114	106	116	107	102	88	109.0	12.3%
Psychiatric Residential Treatment Center	9	12	12	14	11	10	10	10	8	4	4	5	9.1	1.0%
Not Reported	0	14	8	5	2	5	5	5	4	5	4	4	5.1	0.6%
Youth Residential Center II	302	275	268	265	270	244	231	221	222	211	188	161	238.2	26.8%
Total Custody Population	965	909	950	959	941	932	908	869	864	833	804	734	889.0	100.0%
FY15 Monthly Total Population	1,035	1,021	1,053	1,065	1,054	1,048	1,027	1,018	1,027	1,034	1,033	999	1034.5	100.0%
% Change from Previous Year	-6.76%	-10.97%	-9.78%	-9.95%	-10.72%	-11.07%	-11.59%	-14.64%	-15.87%	-19.44%	-22.17%	-26.53%	-14.06%	

*Does not include JCF youth

¹ Includes Emergency Shelter, Maternity or Substance Abuse Residential Treatment, Hospital, Independent Living

FY16 Average Placement Setting Distribution for DOCCustody Youth

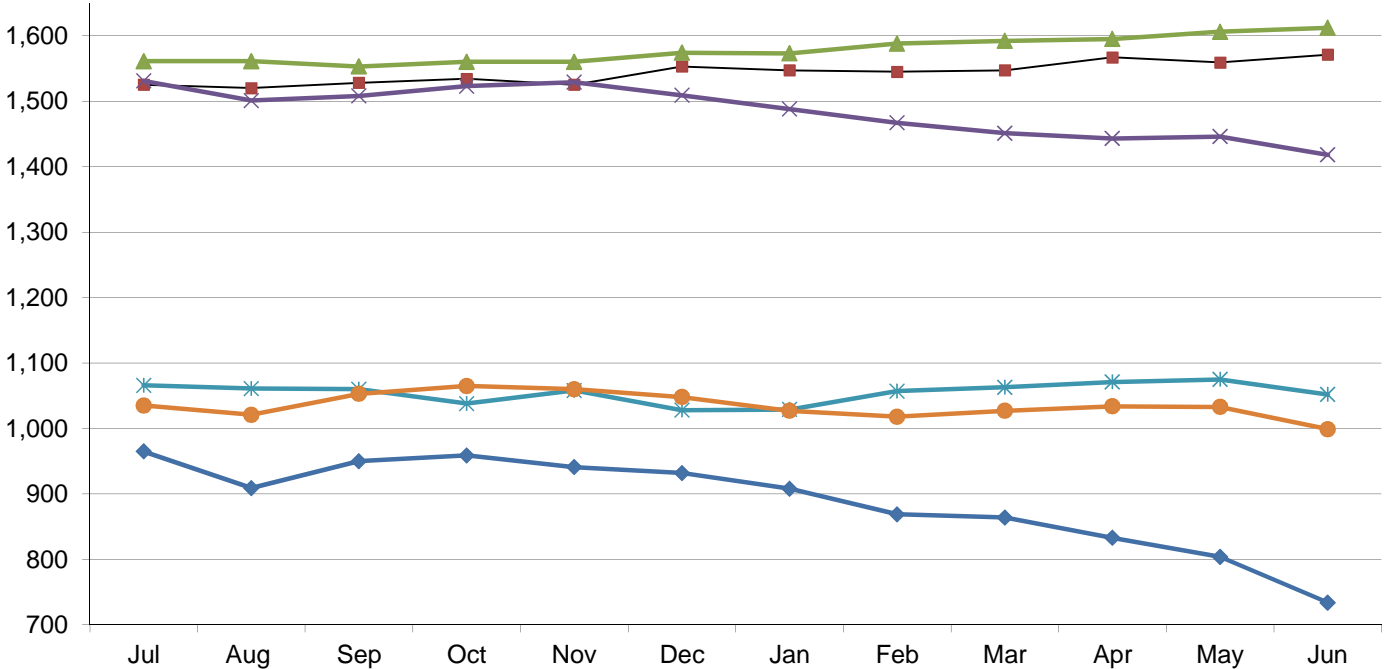


Fiscal Year Flashback	FY12 Mo.	FY13 Mo.	FY14 Mo.	FY15 Mo.
	Avg	Avg	Avg	Avg
Juvenile Correctional Facility	337.0	322.3	307.6	271.8
Detention	158.1	160.8	145.9	151.4
Facility/Other*	92.2	86.1	70.9	79.5
Foster Home	32.4	26.7	24.3	27.6
Home/Relative	317.4	309.4	288.6	287.8
Juvenile Justice Foster Care	44.5	43.7	49.2	50.9
AWOL	87.2	92.8	99.0	103.2
Psychiatric Residential Treatment Center	43.2	33.1	18.3	12.5
Not Reported	60.8	11.4	5.9	12.3
Youth Residential Center II	405.3	398.2	352.7	309.3
Total Custody Population	1578.1	1484.5	1362.4	1306.3
Total Custody Population (no JCF)	1172.8	1086.3	1009.7	1034.5

**Statewide Month End Population: Placements for Youth in the Custody of DOC on the Last Day of Each Month
Placement Detail**

Placements	Jul	Aug	Sep	Oct	Nov	Dec	Jan	Feb	Mar	Apr	May	Jun	Avg	Avg as a %
Community Integration Program	4	2	4	5	4	4	3	4	4	5	3	2	3.7	0.41%
Juvenile Justice Foster Care	36	42	43	48	47	44	46	43	44	39	36	34	41.8	5%
Detention	156	128	148	162	151	159	152	133	125	134	132	129	142.4	16%
Emergency Foster Care	0	0	0	0	0	0	0	0	0	0	0	0	0.0	0%
Emergency Shelter	4	0	4	4	4	1	1	3	4	4	2	5	3.0	0.34%
Family Resource Home	0	0	0	0	0	0	0	0	0	0	0	0	0.0	0.00%
Home	254	230	234	231	226	256	254	250	247	239	255	238	242.8	27%
Hospital	3	5	6	5	1	4	1	1	0	2	2	4	2.8	0.32%
Kinship/Non-Related Kin Care	1	1	4	4	2	2	2	3	3	2	1	3	2.3	0.26%
Not Reported	0	14	8	5	2	5	5	5	4	5	4	4	5.1	1%
Psychiatric Residential Treatment Facility	9	12	12	14	11	10	10	10	8	4	4	5	9.1	1%
Relative Placement	10	10	11	10	13	9	9	9	10	9	6	2	9.0	1.01%
Residential Drug/Alcohol Treatment	4	4	6	5	6	4	2	5	3	2	4	5	4.2	0.47%
Residential Maternity Group Home	1	3	3	3	3	3	4	2	1	1	0	0	2.0	0.22%
Runaway/ AWOL	98	103	119	122	120	113	114	106	116	107	102	88	109.0	12%
Sanction House	5	3	6	6	4	6	6	6	4	4	4	3	4.8	0.53%
Specialized Family Resource Home	2	1	1	1	1	1	1	2	1	1	1	1	1.2	0%
Therapeutic Foster Care	19	18	17	14	17	13	18	15	19	18	17	16	16.8	2%
Transitional Living Program	57	58	56	55	59	54	49	51	49	46	43	34	50.9	6%
Youth Residential Center II	302	275	268	265	270	244	231	221	222	211	188	161	238.2	27%
Total	965	909	950	959	941	932	908	869	864	833	804	734	889	100%

Statewide Juvenile Custody Month End Population



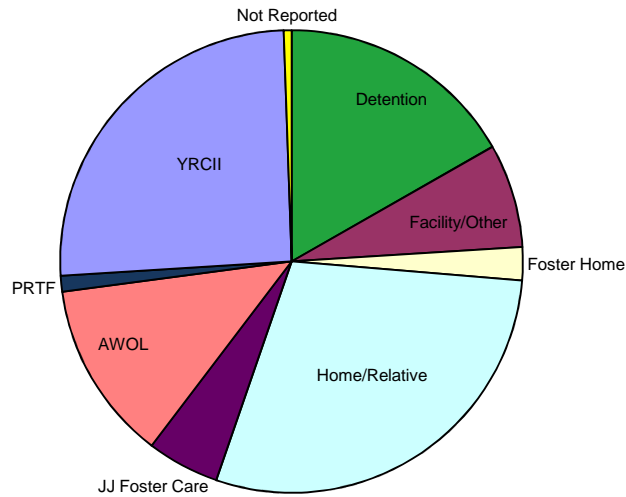
*Data in FY10 - FY13 includes youth who were in a Juvenile Correctional Facility. Starting in FY14, JCF youth are not included.

■ FY11
 ▲ FY12
 × FY13
 ✱ FY14
 ● FY15
 ◆ FY16

Statewide Month End Population: Placements for Youth in the Custody of DOC on June 30, 2016 by Judicial District

	Judicial District																															Tot	%
	1	2	3	4	5	6	7	8	9	10	11	12	13	14	16	15/17/23	18	19	20	21	22	24	25	26	27	28	29	30	31				
Detention	5	1	5	1	1	10	2	5	0	12	6	1	3	4	1	2	45	1	1	1	1	0	1	1	4	3	31	1	3	152	16.74%		
Facility/Other	3	0	4	1	1	0	0	1	1	1	2	0	0	2	0	1	14	1	2	0	2	1	9	1	3	2	11	2	1	66	7.27%		
Foster Home	0	0	0	1	1	0	0	1	0	0	0	2	0	1	0	0	0	0	4	0	0	0	4	0	0	6	0	0	1	21	2.31%		
Home/Relative	12	2	17	5	4	3	0	14	0	14	5	1	3	8	6	12	48	5	8	0	12	1	7	10	6	7	46	3	4	263	28.96%		
Juvenile Justice Foster Care	4	0	9	1	0	0	0	0	0	2	1	2	0	2	3	11	4	0	4	0	0	1	1	0	0	0	1	0	0	46	5.07%		
AWOL	7	0	5	3	2	2	1	0	0	3	3	0	4	4	1	3	41	0	2	0	0	0	3	2	1	2	25	0	0	114	12.56%		
Psychiatric Residential Treatment Facility	0	0	0	2	1	0	1	2	0	0	0	2	0	0	0	1	0	0	0	0	0	0	0	0	1	0	0	0	0	10	1.10%		
Youth Residential Center II	8	1	10	5	3	4	3	7	2	11	9	2	7	9	5	8	50	1	8	3	8	2	17	6	7	8	21	3	3	231	25.44%		
Not Reported	0	0	0	0	0	0	0	0	0	0	0	0	0	0	0	1	2	0	1	0	0	0	0	0	0	0	1	0	0	5	0.55%		
Total	39	4	50	19	13	19	7	30	3	43	26	10	17	30	16	39	204	8	30	4	23	5	42	20	22	28	135	10	12	908	100.00%		

Month End Placement Distribution



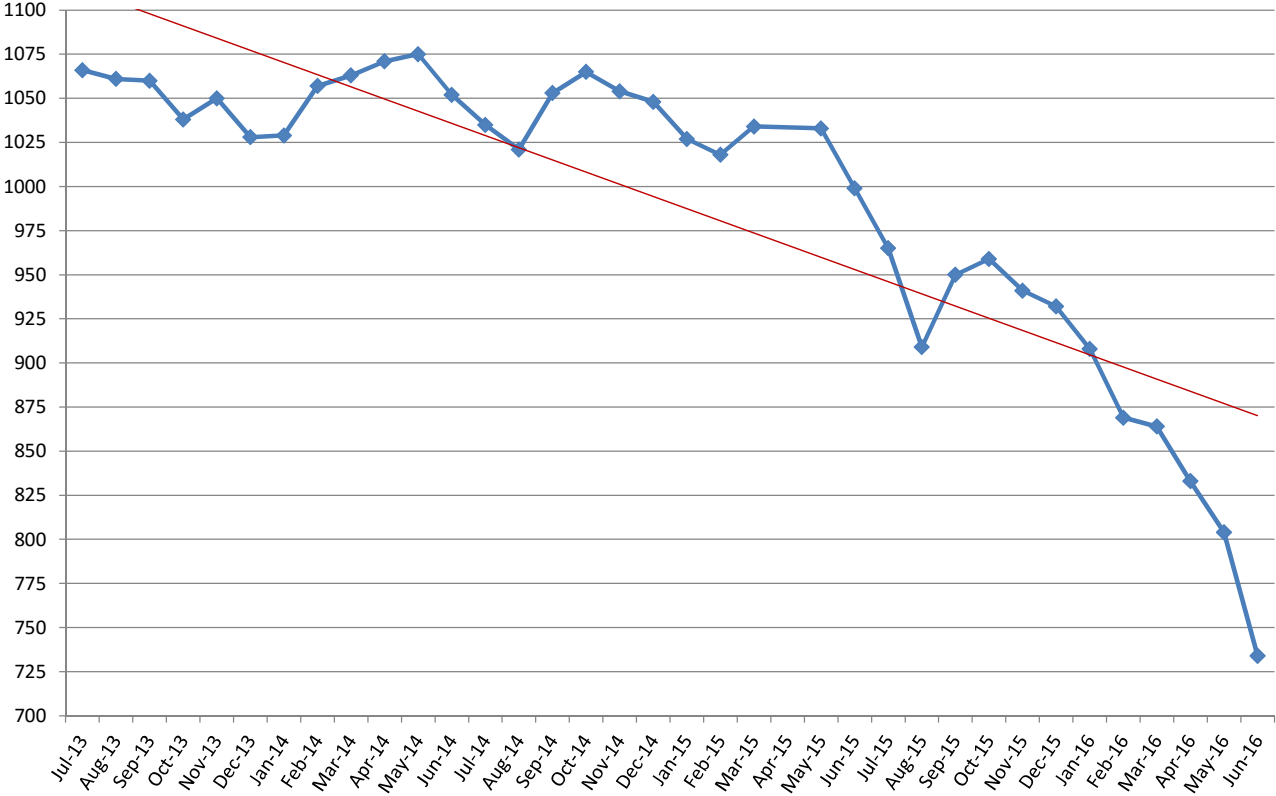
Length of Stay for Youth Whose Placement Type Ended During the FY 2016 Month

		Jul	Aug	Sep	Oct	Nov	Dec	Jan	Feb	Mar	Apr	May	Jun	Avg
PRTF	# placements	6	7	3	4	6	4	4	4	3	6	2	1	4.17
	Average # days	38.6	58.0	38.7	30.5	63.2	91.8	53.8	73.3	54.0	55.5	134.5	49.0	61.73
	Median # days	14.0	26.0	46.0	27.5	63.0	65.5	55.0	73.0	49.0	58.5	134.5	49.0	52.00
YRCII	# placements	86	126	110	75	49	82	78	63	51	48	71	69	75.67
	Average # days	87.8	89.4	64.6	64.9	70.6	76.7	96.4	107.4	92.5	63.7	110.1	110.0	86.17
	Median # days	65.0	67.0	55.0	38.0	54.0	60.5	56.0	71.0	54.0	51.5	74.0	49.0	55.50

Length of Stay for Youth in Respective Placement Type on the Last Day of the Month During FY 2016

		Jul	Aug	Sep	Oct	Nov	Dec	Jan	Feb	Mar	Apr	May	Jun	Avg.
PRTF	# youth	9	12	12	14	11	10	10	10	7	4	4	5	9.00
	Average # days	50.0	34.0	46.6	55.1	54.3	36.4	52.2	42.7	61.0	84.5	21.5	50.0	49.02
	Median # days	46.6	26.0	44.0	48.0	33.0	36.0	53.5	42.0	44.0	68.5	19.5	64.0	44.00
YRCII	# youth	302	275	268	263	270	242	231	221	220	209	185	161	237.25
	Average # days	104.0	99.0	109.2	112.8	118.3	120.7	131.1	130.0	133.1	144.3	140.0	138.7	123.43
	Median # days	66.0	99.7	72.0	73.0	75.0	70.5	82.0	78.0	73.5	888.0	78.0	78.0	76.50

Custody Population Trend



AWOL Population Month-End Trend

