

Juvenile Correctional Facility Population Activity

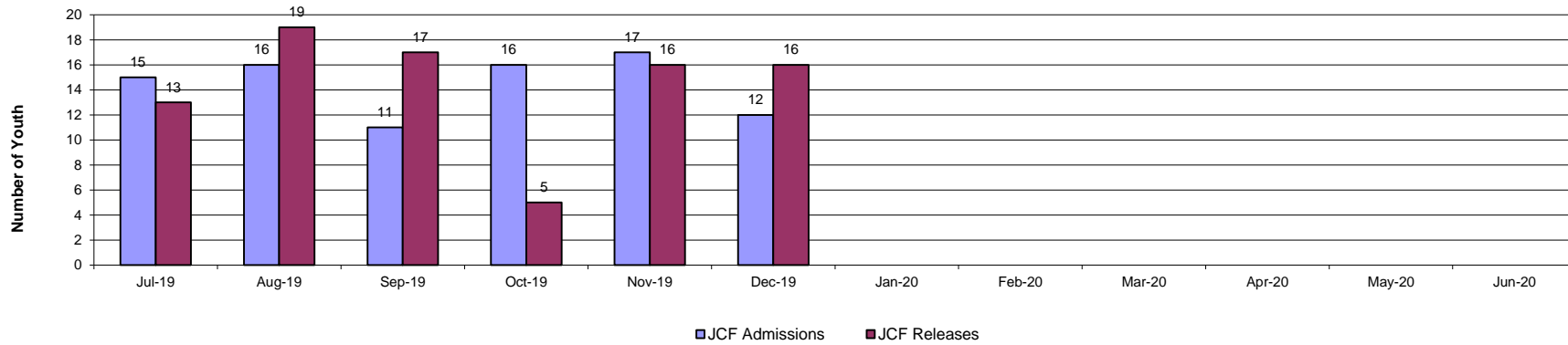
Fiscal Year 2020

Releases in FY 2020 are Less than Admissions by 1.1%

Statewide JCF Activity Summary

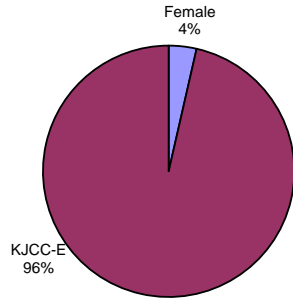
	Jul-19	Aug-19	Sep-19	Oct-19	Nov-19	Dec-19	Jan-20	Feb-20	Mar-20	Apr-20	May-20	Jun-20	Total	FY20 Avg	FY19 Avg
JCF Admissions	15	16	11	16	17	12							87	14.5	14.0
JCF Releases	13	19	17	5	16	16							86	14.3	14.9
Month End Population	168	165	159	170	171	171							1004	167.3	186.0

Statewide JCF Admissions and Releases FY20

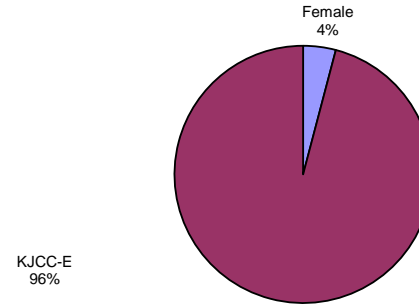


Statewide JCF Month End Population

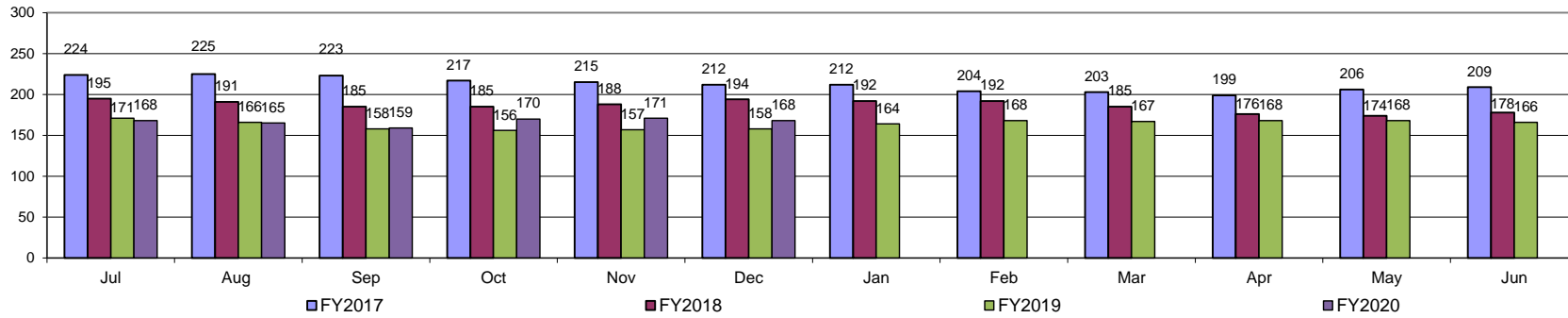
Current Month FY20 Average:
Youth JCF Placement Distribution



FY20 Average:
Youth JCF Placement Distribution



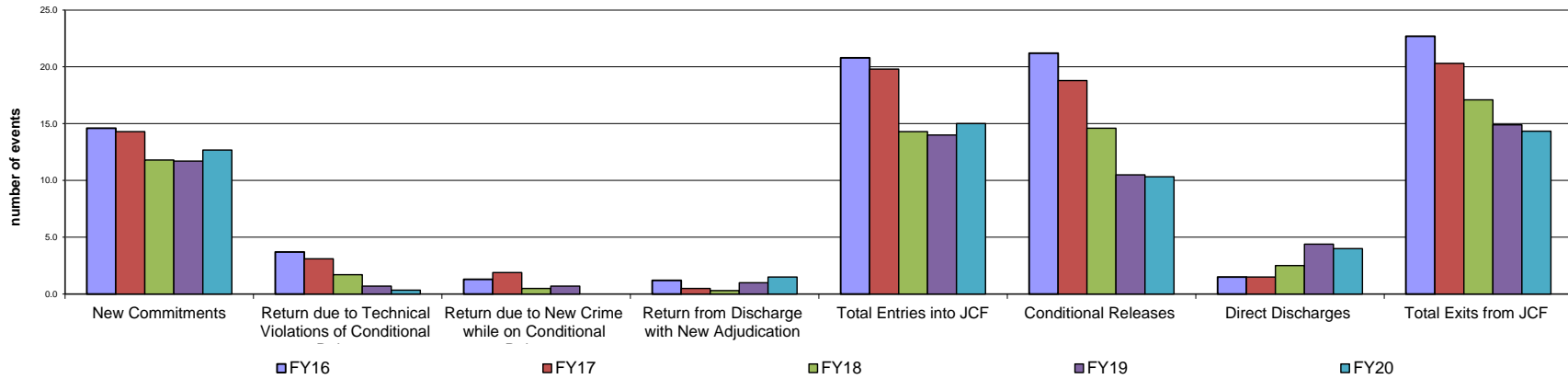
Statewide Juvenile Correctional Facility Month End Population



**Fiscal Year Flashback
 Census Events: Average Monthly Frequency**

	FY09	FY10	FY11	FY12	FY13	FY14	FY15	FY16	FY17	FY18	FY19	FY20
New Commitments	23.7	21.3	22.1	24.3	21.3	19.1	17.3	14.6	14.3	11.8	11.7	12.7
Return due to Technical Violations of Conditional Release	11.0	8.5	7.6	7.8	7.4	5.5	6.3	3.7	3.1	1.7	0.7	0.3
Return due to New Crime while on Conditional Release	1.8	2.5	2.2	1.8	1.7	1.8	1.3	1.3	1.9	0.5	0.7	0.0
Return from Discharge with New Adjudication	1.0	1.1	1.1	0.8	0.4	0.4	0.4	1.2	0.5	0.3	1.0	1.5
Total Entries into JCF	37.5	33.4	32.8	34.6	30.8	26.8	25.3	20.8	19.8	14.3	14.0	15.0
Conditional Releases	37.7	33.2	30.5	31.6	30.5	28.2	25.6	21.2	18.8	14.6	10.5	10.3
Direct Discharges	1.6	1.7	2.3	1.8	1.8	1.7	0.8	1.5	1.5	2.5	4.4	4.0
Total Exits from JCF	39.3	34.8	32.8	33.4	32.3	29.8	26.3	22.7	20.3	17.1	14.9	14.3

Statewide Average JCF Census # Events Across Years



JCF Detail: Statewide

Youth Entering All JCF	Jul-19	Aug-19	Sep-19	Oct-19	Nov-19	Dec-19	Jan-20	Feb-20	Mar-20	Apr-20	May-20	Jun-20	Total	Monthly Avg
New Commitments	14	13	10	14	14	11								12.7
Return due to Technical Violations of Conditional Release	0	1	0	0	1	0								0.3
Return due to New Crime while on Conditional Release	0	0	0	0	0	0								0.0
Return from Discharge with New Adjudication	1	2	1	2	2	1								1.5
Total Entries into JCF	15	16	11	16	17	12								14.5
Youth Exiting Facility	Jul-19	Aug-19	Sep-19	Oct-19	Nov-19	Dec-19	Jan-20	Feb-20	Mar-20	Apr-20	May-20	Jun-20	Total	Monthly Avg
Conditional Releases	12	18	14	2	5	11								10.3
Direct Discharges	1	1	3	3	11	5								4.0
Total Exits from Facility	13	19	17	5	16	16								14.3
Month End Population	Jul-19	Aug-19	Sep-19	Oct-19	Nov-19	Dec-19	Jan-20	Feb-20	Mar-20	Apr-20	May-20	Jun-20	Total	Monthly Avg
Total # Youth placed in JCF on last day of the month	168	165	159	170	171	168								166.8

JCF Detail: Females

Youth Entering Females	Jul-19	Aug-19	Sep-19	Oct-19	Nov-19	Dec-19	Jan-20	Feb-20	Mar-20	Apr-20	May-20	Jun-20	Total	Monthly Avg
New Commitments	1	0	0	0	1	0								0.3
Return due to Technical Violations of Conditional Release	0	0	0	0	1	0								0.2
Return due to New Crime while on Conditional Release	0	0	0	0	0	0								0.0
Return from Discharge with New Adjudication	0	0	0	0	0	0								0.0
Transferring In from another JCF (N/A)	0	0	0	0	0	0								0.0
Total Entries into JCF	1	0	0	0	2	0								0.5
Youth Exiting Facility	Jul-19	Aug-19	Sep-19	Oct-19	Nov-19	Dec-19	Jan-20	Feb-20	Mar-20	Apr-20	May-20	Jun-20	Total	Monthly Avg
Conditional Releases	0	5	1	0	0	0								1.0
Direct Discharges	0	0	1	0	1	0								0.3
Total Exits from Facility	0	5	2	0	1	0								1.3
Month End Population	Jul-19	Aug-19	Sep-19	Oct-19	Nov-19	Dec-19	Jan-20	Feb-20	Mar-20	Apr-20	May-20	Jun-20	Total	Monthly Avg
Total # Youth placed in JCF on last day of the month	12	7	5	5	6	6								6.8

JCF Detail: Kansas Juvenile Correctional Complex Males

Youth Entering KJCC	Jul-19	Aug-19	Sep-19	Oct-19	Nov-19	Dec-19	Jan-20	Feb-20	Mar-20	Apr-20	May-20	Jun-20	Total	Monthly Avg
New Commitments	13	17	10	14	13	11								13.0
Return due to Technical Violations of Conditional Release	0	1	0	0	0	0								0.2
Return due to new crime while on conditional release	0	0	0	0	0	0								0.0
Return from Discharge with New Adjudication	1	2	1	2	2	1								1.5
Transferring In from another JCF	0	0	0	0	0	0								0.0
Total Entries into JCF	14	20	11	16	15	12								14.7
Youth Exiting Facility	Jul-19	Aug-19	Sep-19	Oct-19	Nov-19	Dec-19	Jan-20	Feb-20	Mar-20	Apr-20	May-20	Jun-20	Total	Monthly Avg
Conditional Releases	12	13	13	2	5	11								9.3
Direct Discharges	1	1	2	3	10	5								3.7
Total Exits from Facility	13	14	15	5	15	16								13.0
Month End Population	Jul-19	Aug-19	Sep-19	Oct-19	Nov-19	Dec-19	Jan-20	Feb-20	Mar-20	Apr-20	May-20	Jun-20	Total	Monthly Avg
Total # Youth placed in JCF on last day of the month	156	158	154	165	165	162								160.0

**JCF Month End Summary Management Information
For Youth Placed in JCF on Last Day of the Month in FY20**

Statewide Summary

Fiscal Year 2020 Month End

Length of Stay & Age	Jul	Aug	Sep	Oct	Nov	Dec	Jan	Feb	Mar	Apr	May	Jun
Average Months for all Youth	10.7	10.6	11.2	11.1	11.1	11.2						
Median Months for all Youth	7.3	7.3	7.8	7.1	6.7	6.7						
Average Age All Youth	17.7	17.6	17.7	17.7	17.6	17.7						
Median Age All Youth	17.8	17.7	17.8	17.8	17.8	17.7						

Female Summary

Fiscal Year 2020 Month End

Length of Stay & Age	Jul	Aug	Sep	Oct	Nov	Dec	Jan	Feb	Mar	Apr	May	Jun
Average Months in JCF	8.9	7.3	10.6	11.6	9.7	10.8						
Median Months In JCF	4.1	4.4	5.1	6.1	6.1	7.1						
Average Age	17.9	17.7	17.5	17.6	18.1	18.2						
Median Age	18.1	18.1	17.9	18.0	18.3	18.3						

Male Summary

Fiscal Year 2020 Month End

Length of Stay & Age	Jul	Aug	Sep	Oct	Nov	Dec	Jan	Feb	Mar	Apr	May	Jun
Average Months in JCF	10.8	10.9	11.2	11.0	11.1	11.2						
Median Months In JCF	7.4	7.8	7.9	7.2	6.7	6.7						
Average Age	17.7	17.6	17.7	17.7	17.6	17.6						
Median Age	17.8	17.7	17.8	17.8	17.8	17.7						

**Age of All JCF Youth
Current 2020 Month End Population**

